



## CCSU Community Engagement Activities in 2009-10: Academic Departments and Administrative Units

---

*August 12, 2010 (revised version)<sup>1</sup>*

This document summarizes and organizes descriptions of community engagement activities conducted by academic departments and administrative units or offices at Central Connecticut State University during the 2009-10 academic year. This is the second annual report on community engagement activities conducted at CCSU, and while reporting mechanisms to collect this information are still maturing, this report provides the most comprehensive institutional look at the range of community engagement activities conducted by the campus. It is important to recognize that the report is primarily quantitative in nature, and it does not attempt to highlight, showcase, or prioritize specific community engagement initiatives.

Similar to observations from the 2008-09 report, major findings about community engagement activities conducted in 2009-10 suggest that faculty and staff members are quite involved in community engagement activities. As was observed in the inventory of 2008-09 community engagement activities, inclusion of students in these activities appears to be uneven, especially in activities conducted by academic departments, and emphasis on integrating students into extant community engagement activities may be warranted. Better mechanisms for tracking student involvement are likely needed to determine the scope of impact of community engagement activities on CCSU students and their learning, and further, the quality of data in the report could be improved if a robust definition of community engagement were developed and disseminated.

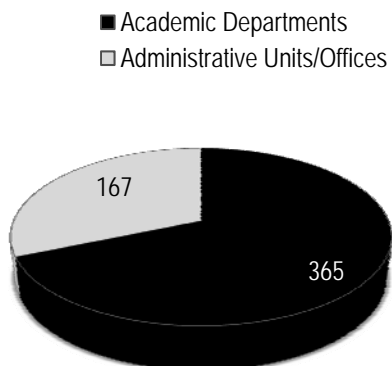
Academic departments reported community engagement activities conducted in 2009-10 in end-of-year reports submitted in May 2010. Administrative units or offices reported community engagement summer of 2010 conducted during 2009-10 through an online data collection tool.

For 2009-10, a total of 532 activities were reported by all 39 academic departments as well as 22 administrative units or offices, compared to 492 total activities in 2008-09 reported by 35 academic departments and 25 administrative units or offices. Just over two-thirds (68%) of these activities were conducted by faculty in academic departments; 37% of all activities were conducted by departments in the School of Arts & Sciences, 23% were conducted by those in the School of Education and Professional Studies, 4% were conducted by those in the School of Business, and 4% were conducted by those in the School of Engineering and Technology. The remaining 32% were conducted by administrative units, with 12% conducted by units in the Division of Student Affairs, 9% conducted by extra-divisional units (the Center for Public Policy and Social Research, the Institute for Municipal and Regional Policy, and the Institute of Technology and Business Development), and 11% were conducted by units from among three other divisions. A comprehensive inventory of reported activities appears in the appendix.

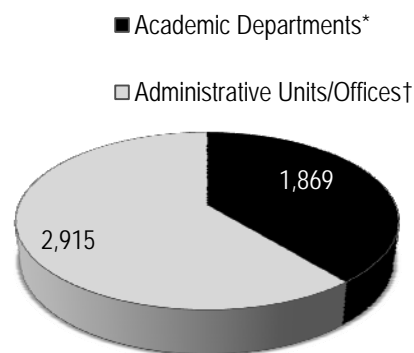
---

<sup>1</sup> In an earlier version of this report, a single activity was reported to encompass all career fairs for students and outreach to classes and groups; 5,000 students were attributed to this activity. Following a review of this activity and level of student participation in the context of the entire report, this number of students has been removed from this revised version because it appears inconsistent with other elements of the report. Report text, charts, and tables have been adjusted accordingly.

**Number of Reported Community Engagement Activities**



**Estimated\* Number of Students Involved in Community Engagement Activities**

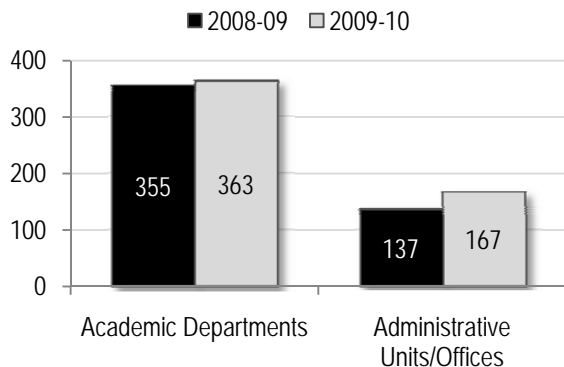


\* All groups were asked to estimate how many students participated in an activity. For academic departments, CCSU student participation was described in 75 reported activities, typically associated with classes, but for 20 of these, the number of students was not provided. In these instances, student participation was estimated at 22 for undergraduate classes and 16 for graduate classes. †See note on page 1.

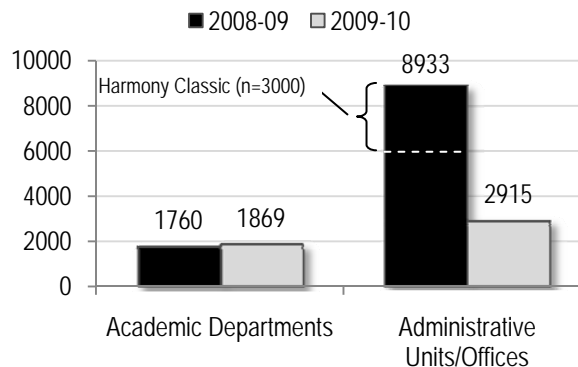
Data Sources: Academic Department 2009-10 Annual Reports and Survey of Administrative Units, July 2010.

CCSU students were much more heavily involved in activities sponsored by administrative units or offices than those conducted by academic departments. The total number of CCSU students involved was estimated at 4,784, although this figure double-counts those students who participated in more than one activity, and the number of students participating in community engagement activities reported by faculty was not reported about a third of the time. In the activities where student participation was evident but not reported, the number attributed to student participation in the activity was very roughly estimated at 22 undergraduate students or 16 graduate students, as appropriate. Just under two-fifths (39%) of students in the inventory were involved in community engagement activities reported by faculty in academic departments, and 30% of the students were involved in activities reported by units in the Division of Student Affairs; the remaining third (31%) were involved in activities conducted by units in all other divisions. About two-thirds (66%) of all reported activities (78% of those in academic departments) did not include students at all – often such community engagement activities were outreach or workshops, board memberships, consulting or mentoring/tutoring activities.

**Number of Reported Community Engagement Activities**



**Estimated Number of Students Involved in Community Engagement Activities**



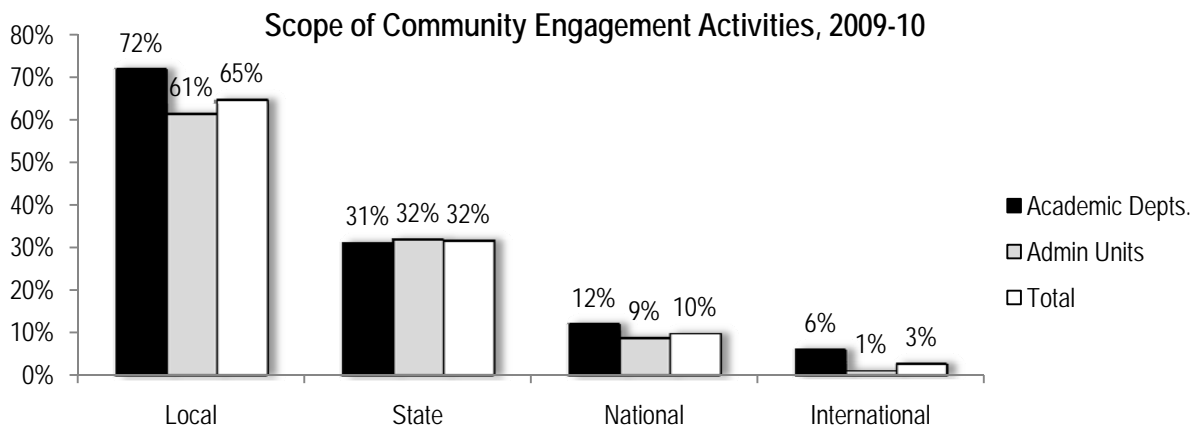
Categories for community engagement activities were adapted from a taxonomy developed by faculty at the University of Vermont (Westdijk, Koliba & Hamshaw, forthcoming). Administrative units and offices reported their activities using the adapted categories for activity type and scope. Community engagement activities identified by departments in their annual reports were coded by the Office of Continuing Education and Community Engagement. In both instances, activities could be assigned to multiple categories and so percentages will add to well over 100 percent. Almost three-quarters (74%) of all activities were categorized as workshops or outreach; almost a half (47%) were technical assistance or consulting. The remaining activities consisted of and board memberships (18%), program evaluation (13%), service learning (10%), expert testimony / media communication (6%), and policy analysis (5%).

### Types of Community Engagement Activities Conducted by Administrative Units in 2008-09

Type of Activity	2008-09						2009-10					
	Academic Depts.		Admin. Units		Grand Total		Academic Depts.		Admin. Units		Grand Total	
	N	Pct	N	Pct	N	Pct	N	Pct	N	Pct	N	Pct
Workshops / Outreach	215	61%	87	64%	302	61%	264	73%	126	75%	390	74%
Technical Assistance / Consulting	137	39%	44	32%	181	37%	222	61%	28	17%	250	47%
Member of Boards, Committees, Planning Grps.	57	16%	27	20%	84	17%	67	18%	29	17%	96	18%
Program Evaluation	12	3%	20	15%	32	7%	52	14%	16	10%	68	13%
Service-Learning / Applied Research	35	10%	34	25%	69	14%	20	6%	31	19%	51	10%
Expert Testimony / Media Communication	45	13%	29	21%	74	15%	25	7%	8	5%	33	6%
Policy Analysis	12	3%	13	9%	25	5%	15	4%	13	8%	28	5%

Activities could be assigned to multiple categories, and so percentages will add to over 100 percent

Perhaps unsurprisingly, the scope of most activities was local. Again, respondents to the administrative unit data collection request were asked to categorize the scope of their activities using the community engagement activity taxonomy. Activities harvested from annual reports were coded by the Office of Continuing Education and Community Engagement. Activities that were categorized as local comprised about two-thirds (65%) of those reported. Activities that were statewide in scope comprised 32% of those reported. Just under a tenth (10%) of the community engagement activities were national in scope. About one out of every twenty (5%) of reported activities were international in scope. The scope of reported activities for 2009-10 more or less reflects the same distribution as those reported in 2008-09.



Percentages will add to over 100%

Community engagement activities in 2009-10 focused most prominently on collaborations with local pre-K-12 schools (30%), local non-profit organizations (27%), statewide/regional non-profit groups (23%), and local community-based groups (22%). Partnerships with government agencies and businesses represented much smaller proportions of community engagement activities, with state government offices/agencies accounting for 8% of activities, local government offices/agencies accounting for 5% of activities, local businesses accounting for 4% of activities, and mid-sized businesses in the state accounting for 4% of activities.

**Scope of Community Engagement Activities (Detail)**

Type of Activity	2008-09						2009-10					
	Academic Depts.		Admin. Units		Grand Total		Academic Depts.		Admin. Units		Grand Total	
	N	Pct	N	Pct	N	Pct	N	Pct	N	Pct	N	Pct
LOCAL: Small Community-Based Groups	59	17%	42	31%	101	21%	86	24%	32	19%	118	22%
LOCAL: Non-profits	113	32%	49	36%	162	33%	95	26%	46	28%	141	27%
LOCAL: Pre K-12 Schools	126	35%	37	27%	163	33%	116	32%	45	27%	161	30%
LOCAL: Businesses	27	8%	23	17%	50	10%	13	3%	12	7%	23	4%
LOCAL: Government Offices/ Agencies	23	6%	41	30%	64	13%	7	2%	19	11%	26	5%
STATE: Regional Non-profits	71	20%	19	14%	90	18%	94	26%	28	17%	122	23%
STATE: Mid-size businesses	24	7%	12	9%	36	7%	14	4%	5	3%	19	4%
STATE: Government Offices/ Agencies	30	8%	12	9%	42	9%	17	5%	26	16%	43	8%
NATIONAL: Non-profits	26	7%	27	20%	53	11%	25	7%	13	8%	38	7%
NATIONAL: Businesses/ Corporations	1	0%	10	7%	11	2%	6	2%	3	2%	9	2%
NATIONAL: Government Offices/ Agencies	8	2%	39	28%	47	10%	2	1%	7	4%	9	2%
INTERNAT.: Non-profits/ NGOs	5	1%	10	7%	15	3%	3	1%	7	4%	10	2%
INTERNAT.: Multinational Corporations	1	0%	6	4%	7	1%	0	0%	2	1%	2	0%
INTERNAT.: Government Offices/ Agencies	6	2%	5	4%	11	2%	1	0%	5	3%	6	1%

Percentages will add to over 100%

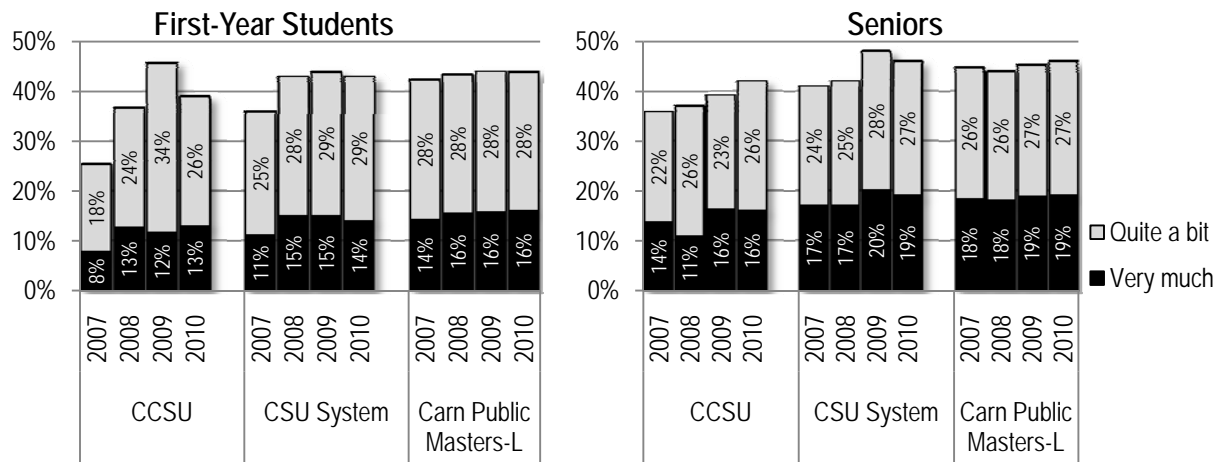
## Student Impact and Student Learning

This data collection project did not attempt to measure the impact of community engagement activities on CCSU students or their learning and development aside from estimating the number of students involved in each activity. Even this effort to count student involvement, yielded inconsistent results, since most academic departments reported only that students were involved in initiatives, not the actual number of students who participated. These estimates may very well not reflect the actual number of participants. This level of detail from reports may suggest that better ways to track student involvement in community engagement activities are needed.

Results from the National Survey of Student Engagement (NSSE), a nationally recognized instrument for measuring student involvement in their educational experience, indicate that CCSU students report *lower levels* of institutional effect on development in contributing to the welfare of the community than do students at similar universities, although these levels have begun to increase in recent years (Hosch & Joslyn, 2010; CCSU NSSE Results, 2010).

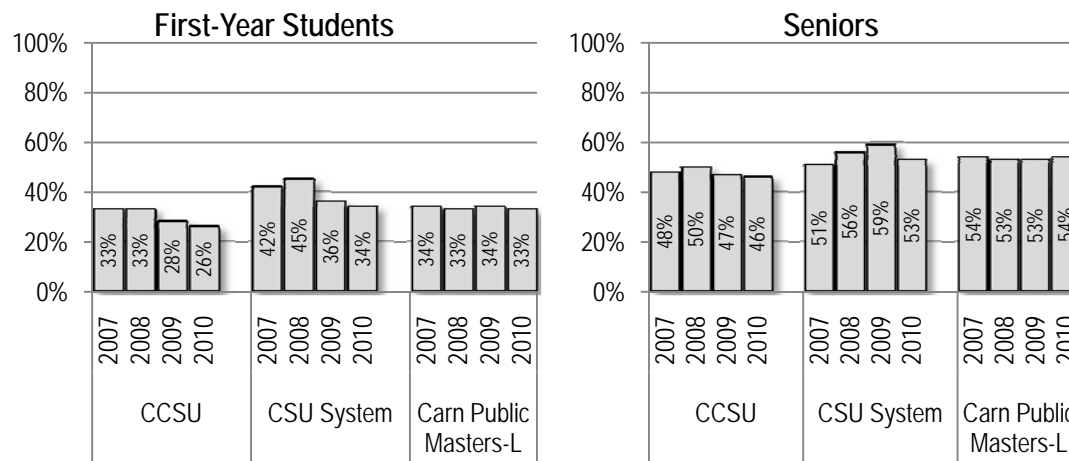
### Institutional Effect on Students Contributing to the Welfare of the Community

*To what extent has your experience at this institution contributed to your knowledge, skills, and personal development in contributing to the welfare of your community? (1=Very little, 2=Some, 3=Quite a bit, 4=Very much)*



### Students Who Did Community Service or Volunteer Work

*Which of the following have you done before you graduate from your institution?(Community Service or Volunteer Work)*



## Summary and Possible Next Steps

Results from this collection of information about community engagement activities appear to indicate substantial involvement among faculty and staff in such activities, but student involvement appears less robust. Better tracking of community engagement activities and student involvement in them may mitigate this picture to some extent, although NSSE results would seem again to confirm that CCSU students may be less involved in community engagement activities than are students at comparable institutions.

Possible next steps might include:

- Develop and disseminate a robust institutional definition of community engagement by faculty groups charged with advancing and monitoring community engagement efforts to promote more meaningful reporting.
  - A useful starting point might be the Carnegie Foundation (2007) description of community engagement as “the collaboration between higher education institutions and their larger communities (local, regional/state, national, global) for the mutually beneficial exchange of knowledge and resources in a context of partnership and reciprocity.”
  - The Carnegie formulation of community engagement places emphasis on collaboration, mutual benefit, exchange, partnership, and reciprocity; such elements are somewhat muted or missing from the CCSU community engagement data collection instrument and [strategic plan website](#) (CCSU, 2010).
- Re-examine the taxonomy (Westdijk, Koliba, & Hamshaw) used in this report to classify type, scope, and partners of community engagement activities, especially in the context of a more broadly shared campus formulation of community engagement. Again, it would be best if a faculty group took on this charge and shared what they develop with colleagues.
- Improve mechanisms for data collection and data quality.
  - Extend online data collection of community engagement activities to faculty in academic departments. This collection should be completed by April each year and reports delivered to chairs of academic departments for inclusion into end-of-year department reports. Chairs could then supplement with additional information, but this method of data collection could both gather better data and reduce reporting burden on department chairs.
  - House tracking of community engagement activities and student participation in these activities in a centralized location, such as the Office of Continuing Education and Community Engagement.
  - This office or a faculty group might develop a clearinghouse to examine submitted activities and align them with the institutional definition of community engagement.
- Provide assistance and support to help faculty integrate students and learning activities into extant community engagement initiatives.

## References

- Carnegie Foundation for the Advancement of Teaching. (2007). *Community Engagement Elective Classification*. Retrieved August 2, 2010, from <http://www.carnegiefoundation.org/classifications/index.asp?key=1213>.
- Central Connecticut State University. (2010). *Community Engagement*. Retrieved August 2, 2010, from <http://www.ccsu.edu/page.cfm?p=3426>.
- Central Connecticut State University. (2010). *National Survey of Student Engagement Results*. Retrieved August 11, 2010, from <http://www.ccsu.edu/page.cfm?p=3466>.
- Hosch, B. and Joslyn, A. (2010). *Analysis of results from the National Survey of Student Engagement: Central Connecticut State University, 2009*. New Britain, CT: Office of Institutional Research and Assessment, Central Connecticut State University.
- Westdijk, K. Koliba, C. and Hamshaw, K. (forthcoming). "Collecting data to inform decision-making and action: Research and planning for school-wide faculty civic engagement." *Journal of Higher Education Outreach and Engagement*.

## Appendix: Additional Data Tables

### Community Engagement Activity Types by School / Division

School / Division	Activities (N)	Est. Students (N)	Service-Learning Applied Research	Policy Analysis	Program Evaluation	Workshops/ Outreach	Technical Assistance/ Consulting	Expert Testimony/ Media Communication	Member of Boards, Committees, Planning Groups
<b>Academic Departments</b>									
School of Arts & Sciences	196	988	7%	7%	13%	70%	59%	11%	16%
School of Business	24	100	8%	0%	13%	63%	63%	4%	17%
School of Education & Professional Studies	122	690	6%	2%	18%	74%	62%	1%	25%
School of Engineering & Technology	23	91	0%	0%	4%	91%	65%	9%	9%
<b>Subtotal</b>	<b>365</b>	<b>1,869</b>	<b>6%</b>	<b>4%</b>	<b>14%</b>	<b>72%</b>	<b>61%</b>	<b>7%</b>	<b>18%</b>
<b>Administrative Units / Offices</b>									
Academic Affairs	40	691	28%	10%	5%	68%	15%	5%	25%
Administrative Affairs	10	585	0%	0%	0%	70%	0%	0%	0%
Extra-Divisional Units	49	218	39%	14%	24%	69%	37%	12%	4%
Information Technology	4	1	0%	0%	0%	25%	25%	0%	25%
Student Affairs	64	1,420	2%	3%	3%	89%	5%	0%	25%
<b>Subtotal</b>	<b>167</b>	<b>2,915</b>	<b>19%</b>	<b>8%</b>	<b>10%</b>	<b>75%</b>	<b>17%</b>	<b>5%</b>	<b>17%</b>
<b>Grand Total</b>	<b>532</b>	<b>4,784</b>	<b>10%</b>	<b>5%</b>	<b>13%</b>	<b>73%</b>	<b>47%</b>	<b>6%</b>	<b>18%</b>

## Community Engagement Activity Types by School and Department / Division and Unit or Office

	Activities (N)	Est. Students (N)	Service- Learning Applied Research	Policy Analysis	Program Evaluation	Workshops/ Outreach	Technical Assistance/ Consulting	Expert Testimony/ Media Communication	Member of Boards, Committees, Planning Groups
<b>Academic Departments</b>									
<b>School of Arts &amp; Sciences</b>									
Anthropology	12		17%	17%	25%	50%	75%	8%	17%
Art	14	1	7%	0%	21%	79%	71%	0%	7%
Biology	7	41	14%	0%	0%	57%	86%	14%	14%
Chemistry	5		0%	0%	20%	100%	80%	0%	0%
Computer Science	13	17	23%	0%	8%	85%	69%	0%	15%
Criminology & Criminal Justice	8		0%	13%	38%	25%	75%	25%	25%
Design (Graphic/Information)	4	96	0%	0%	25%	75%	100%	50%	25%
Economics	12	108	0%	0%	0%	100%	0%	0%	0%
English	11		0%	0%	0%	36%	55%	0%	82%
Geography	5		0%	0%	0%	80%	40%	0%	0%
History	3	60	0%	0%	67%	67%	67%	0%	0%
Mathematical Sciences	15	60	0%	0%	7%	60%	53%	0%	47%
Modern Languages	3	22	33%	0%	0%	67%	67%	0%	0%
Music	8	3	13%	13%	13%	88%	63%	0%	13%
Philosophy	12	148	0%	0%	0%	100%	58%	0%	0%
Physics & Earth Science	4		0%	0%	25%	75%	0%	0%	25%
Political Science	24	42	4%	4%	13%	83%	63%	17%	0%
Psychology	4	20	0%	50%	75%	75%	50%	25%	0%
Sociology	20	70	15%	25%	10%	70%	50%	35%	5%
Theatre	9		0%	11%	11%	11%	89%	33%	33%
<b>Subtotal</b>	<b>196</b>	<b>988</b>	<b>7%</b>	<b>7%</b>	<b>13%</b>	<b>70%</b>	<b>59%</b>	<b>11%</b>	<b>16%</b>
<b>School of Business</b>									
Accounting	3	42	0%	0%	0%	100%	67%	0%	0%
Finance	5		0%	0%	0%	60%	40%	0%	0%
Management and Organization	3		0%	0%	0%	100%	100%	0%	0%
MIS	11	36	0%	0%	27%	55%	73%	9%	36%
Marketing	2	22	100%	0%	0%	0%	0%	0%	0%
<b>Subtotal</b>	<b>24</b>	<b>100</b>	<b>8%</b>	<b>0%</b>	<b>13%</b>	<b>63%</b>	<b>63%</b>	<b>4%</b>	<b>17%</b>

	Activities (N)	Est. Students (N)	Service- Learning Applied Research	Policy Analysis	Program Evaluation	Workshops/ Outreach	Technical Assistance/ Consulting	Expert Testimony/ Media Communication	Member of Boards, Committees, Planning Groups
<b>School of Education &amp; Professional Studies</b>									
Counseling and Family Therapy	10	110	0%	0%	30%	80%	80%	0%	0%
Educational Leadership	10		0%	0%	50%	60%	60%	0%	60%
Nursing	3	22	33%	0%	0%	67%	0%	0%	0%
Physical Education & Human Performance	15	95	0%	0%	0%	100%	47%	0%	0%
Reading and Language Arts	13	15	0%	0%	8%	69%	69%	0%	23%
Social Work	13		0%	0%	8%	8%	8%	0%	92%
Special Education	2		0%	50%	50%	100%	100%	0%	0%
Teacher Education	56	448	11%	2%	20%	84%	77%	2%	16%
<b>Subtotal</b>	<b>122</b>	<b>690</b>	<b>6%</b>	<b>2%</b>	<b>18%</b>	<b>74%</b>	<b>62%</b>	<b>1%</b>	<b>25%</b>
<b>School of Engineering &amp; Technology</b>									
Biomolecular Sciences	10	54	0%	0%	10%	100%	100%	10%	0%
Computer Electronics & Graphics Technology	1		0%	0%	0%	100%	0%	0%	0%
Engineering	7	12	0%	0%	0%	86%	71%	0%	14%
Manufacturing & Construction Management	4	25	0%	0%	0%	75%	0%	25%	25%
Technology & Engineering Education	1		0%	0%	0%	100%	0%	0%	0%
<b>Subtotal</b>	<b>23</b>	<b>91</b>	<b>0%</b>	<b>0%</b>	<b>4%</b>	<b>91%</b>	<b>65%</b>	<b>9%</b>	<b>9%</b>
<b>Academic Departments Subtotal</b>	<b>365</b>	<b>1,869</b>	<b>6%</b>	<b>4%</b>	<b>14%</b>	<b>72%</b>	<b>61%</b>	<b>7%</b>	<b>18%</b>
<b>Administrative Units / Offices</b>									
<b>Academic Affairs</b>									
Center for Advising & Career Exploration	7	1	14%	14%	0%	57%	14%	0%	43%
Center for International Education	9	430	56%	0%	11%	89%	11%	22%	0%
Office of Institutional Research and Assessment	4		25%	75%	25%	25%	75%	0%	75%
Provost	3		0%	0%	0%	0%	0%	0%	100%
School of Arts & Sciences, Dean's Office	2	25	0%	0%	0%	100%	0%	0%	50%
School of Education & Prof Studies, Dean's Office	10	180	0%	0%	0%	80%	0%	0%	0%
School of Engineering and Technology	4	55	100%	0%	0%	100%	0%	0%	0%
University Learning Center	1		0%	0%	0%	0%	100%	0%	0%
<b>Subtotal</b>	<b>40</b>	<b>691</b>	<b>28%</b>	<b>10%</b>	<b>5%</b>	<b>68%</b>	<b>15%</b>	<b>5%</b>	<b>25%</b>
<b>Administrative Affairs</b>									
Department of Athletics	9	585	0%	0%	0%	78%	0%	0%	0%
Office of Environmental Health & Safety	1		0%	0%	0%	0%	0%	0%	0%
<b>Subtotal</b>	<b>10</b>	<b>585</b>	<b>0%</b>	<b>0%</b>	<b>0%</b>	<b>70%</b>	<b>0%</b>	<b>0%</b>	<b>0%</b>

	Activities (N)	Est. Students (N)	Service- Learning Applied Research	Policy Analysis	Program Evaluation	Workshops/ Outreach	Technical Assistance/ Consulting	Expert Testimony/ Media Communication	Member of Boards, Committees, Planning Groups
<b>Extra-Divisional Units</b>									
Center for Public Policy and Social Research	15	108	67%	7%	53%	40%	67%	20%	13%
Institute for Municipal and Regional Policy	17	110	47%	35%	24%	65%	6%	18%	0%
Institute of Technology & Business Development	17		6%	0%	0%	100%	41%	0%	0%
<b>Subtotal</b>	<b>49</b>	<b>218</b>	<b>39%</b>	<b>14%</b>	<b>24%</b>	<b>69%</b>	<b>37%</b>	<b>12%</b>	<b>4%</b>
<b>Information Technology</b>									
Instructional Design and Technology Resource Ctr	3	1	0%	0%	0%	0%	33%	0%	33%
User Support	1		0%	0%	0%	100%	0%	0%	0%
<b>Subtotal</b>	<b>4</b>	<b>1</b>	<b>0%</b>	<b>0%</b>	<b>0%</b>	<b>25%</b>	<b>25%</b>	<b>0%</b>	<b>25%</b>
<b>Student Affairs</b>									
Counseling & Wellness Center	3	7	0%	0%	0%	33%	0%	0%	33%
Department of Residence Life	22	444	0%	0%	0%	100%	5%	0%	32%
Office of Student Conduct	9	175	11%	22%	22%	100%	22%	0%	22%
Pre-Collegiate and Access Services	14	115	0%	0%	0%	93%	0%	0%	7%
Student Activities and Leadership Development	10	159	0%	0%	0%	90%	0%	0%	10%
Student Affairs Office	4	20	0%	0%	0%	50%	0%	0%	75%
Student Center	2	500	0%	0%	0%	50%	0%	0%	50%
<b>Subtotal</b>	<b>64</b>	<b>1,420</b>	<b>2%</b>	<b>3%</b>	<b>3%</b>	<b>89%</b>	<b>5%</b>	<b>0%</b>	<b>25%</b>
<b>Administrative Units / Offices Subtotal</b>	<b>167</b>	<b>2,915</b>	<b>19%</b>	<b>8%</b>	<b>10%</b>	<b>75%</b>	<b>17%</b>	<b>5%</b>	<b>17%</b>
<b>Grand Total</b>	<b>532</b>	<b>4,784</b>	<b>10%</b>	<b>5%</b>	<b>13%</b>	<b>73%</b>	<b>47%</b>	<b>6%</b>	<b>18%</b>

## Scope of Community Engagement Activities by School / Division

School / Division	Activities (N)	Local					State			National			International		
		Small Community-Based Groups	Non-profits	Pre K-12 Schools	Businesses	Government Offices/ Agencies	Regional Non-profits	Mid-size businesses	Government Offices/ Agencies	Non-profits	Businesses/ Corporations	Government Offices/ Agencies	Non-profits/ NGOs	Multinational Corporations	Government Offices/ Agencies
<b>Academic Departments</b>															
School of Arts & Sciences	196	23%	24%	19%	4%	3%	34%	4%	7%	7%	1%	1%	0%	0%	1%
School of Business	24	13%	25%	8%	21%	0%	29%	17%	4%	0%	13%	0%	4%	0%	0%
School of Education & Professional Studies	122	28%	32%	55%	1%	1%	11%	0%	2%	7%	2%	0%	1%	0%	0%
School of Engineering & Technology	23	13%	13%	39%	0%	0%	30%	9%	0%	9%	0%	0%	4%	0%	0%
<b>Subtotal</b>	<b>365</b>	<b>24%</b>	<b>26%</b>	<b>32%</b>	<b>4%</b>	<b>2%</b>	<b>26%</b>	<b>4%</b>	<b>5%</b>	<b>7%</b>	<b>2%</b>	<b>1%</b>	<b>1%</b>	<b>0%</b>	<b>0%</b>
<b>Administrative Units / Offices</b>															
Academic Affairs	40	25%	25%	43%	10%	8%	30%	3%	10%	10%	3%	8%	10%	5%	10%
Administrative Affairs	10	0%	40%	0%	0%	10%	0%	0%	10%	30%	10%	0%	0%	0%	0%
Extra-Divisional Units	49	18%	27%	20%	12%	14%	18%	8%	39%	0%	2%	6%	2%	0%	0%
Information Technology	4	25%	25%	50%	0%	0%	0%	0%	25%	0%	0%	0%	0%	0%	0%
Student Affairs	64	19%	28%	25%	3%	13%	11%	0%	2%	9%	0%	2%	3%	0%	2%
<b>Subtotal</b>	<b>167</b>	<b>19%</b>	<b>28%</b>	<b>27%</b>	<b>7%</b>	<b>11%</b>	<b>17%</b>	<b>3%</b>	<b>16%</b>	<b>8%</b>	<b>2%</b>	<b>4%</b>	<b>4%</b>	<b>1%</b>	<b>3%</b>
<b>Grand Total</b>	<b>532</b>	<b>22%</b>	<b>27%</b>	<b>30%</b>	<b>5%</b>	<b>5%</b>	<b>23%</b>	<b>4%</b>	<b>8%</b>	<b>7%</b>	<b>2%</b>	<b>2%</b>	<b>2%</b>	<b>0%</b>	<b>1%</b>

Scope of Community Engagement Activities by School and Departments / Division and Unit

School/Dept , Division/ Unit	Activities (N)	Local					State			National			International		
		Small Community-Based Groups	Non-profits	Pre K-12 Schools	Businesses	Government Offices/ Agencies	Regional Non-profits	Mid-size businesses	Government Offices/ Agencies	Non-profits	Businesses/ Corporations	Government Offices/ Agencies	Non-profits/ NGOs	Multinational Corporations	Government Offices/ Agencies
<b>Academic Departments</b>															
<b>Arts &amp; Sciences</b>															
Anthropology	12	42%	42%	0%	8%	0%	33%	0%	0%	17%	0%	0%	0%	0%	0%
Art	14	43%	21%	43%	0%	0%	36%	0%	0%	7%	0%	0%	0%	0%	0%
Biology	7	14%	14%	29%	14%	0%	14%	14%	14%	0%	0%	0%	0%	0%	0%
Chemistry	5	20%	20%	60%	0%	0%	0%	0%	0%	0%	0%	0%	0%	0%	0%
Communication	13	31%	38%	8%	0%	8%	38%	8%	15%	0%	0%	0%	0%	0%	0%
Computer Science	8	13%	13%	0%	0%	13%	13%	0%	25%	50%	0%	0%	0%	0%	0%
Criminology & Criminal Justice	4	25%	25%	0%	0%	0%	25%	0%	75%	0%	0%	0%	0%	0%	0%
Design (Graphic/Information)	12	0%	0%	0%	0%	0%	100%	0%	0%	0%	0%	0%	0%	0%	0%
Economics	11	55%	64%	0%	0%	9%	0%	0%	0%	0%	0%	0%	0%	0%	0%
English	5	20%	0%	80%	0%	0%	0%	0%	0%	0%	0%	0%	0%	0%	0%
Geography	3	0%	67%	0%	0%	0%	33%	0%	0%	0%	0%	0%	0%	0%	0%
History	15	13%	20%	20%	0%	0%	53%	0%	7%	0%	0%	7%	0%	0%	7%
Mathematical Sciences	3	0%	0%	67%	0%	0%	33%	0%	0%	0%	0%	0%	0%	0%	0%
Modern Languages	8	25%	0%	38%	0%	0%	25%	0%	0%	0%	0%	0%	0%	0%	0%
Music	12	8%	42%	33%	8%	0%	42%	8%	0%	0%	0%	0%	0%	0%	0%
Philosophy	4	0%	25%	0%	25%	0%	25%	25%	25%	0%	0%	0%	0%	0%	0%
Physics & Earth Science	24	38%	17%	29%	0%	0%	29%	0%	4%	21%	0%	0%	0%	0%	0%
Political Science	4	0%	0%	25%	0%	0%	25%	0%	25%	25%	0%	25%	0%	0%	0%
Psychology	20	25%	30%	10%	10%	15%	25%	15%	5%	5%	0%	0%	0%	0%	0%
Sociology	9	11%	22%	0%	11%	0%	67%	11%	11%	0%	0%	0%	0%	0%	0%
Theatre	3	0%	0%	0%	0%	0%	33%	0%	0%	0%	33%	0%	0%	0%	0%
<b>Subtotal</b>	<b>196</b>	<b>23%</b>	<b>24%</b>	<b>19%</b>	<b>4%</b>	<b>3%</b>	<b>34%</b>	<b>4%</b>	<b>7%</b>	<b>7%</b>	<b>1%</b>	<b>1%</b>	<b>0%</b>	<b>0%</b>	<b>1%</b>

School/Dept , Division/ Unit	Activities (N)	Local					State			National			International		
		Small Community-Based Groups	Non-profits	Pre K-12 Schools	Businesses	Government Offices/ Agencies	Regional Non-profits	Mid-size businesses	Government Offices/ Agencies	Non-profits	Businesses/ Corporations	Government Offices/ Agencies	Non-profits/ NGOs	Multinational Corporations	Government Offices/ Agencies
<b>Business</b>															
Accounting	3	0%	67%	0%	0%	0%	100%	0%	0%	0%	0%	0%	0%	0%	0%
Finance	5	0%	0%	20%	0%	0%	20%	0%	0%	0%	60%	0%	0%	0%	0%
Management and Organization	3	33%	33%	33%	67%	0%	0%	67%	0%	0%	0%	0%	0%	0%	0%
MIS	11	18%	27%	0%	9%	0%	27%	18%	9%	0%	0%	0%	9%	0%	0%
Marketing	2	0%	0%	0%	100%	0%	0%	0%	0%	0%	0%	0%	0%	0%	0%
<b>Subtotal</b>	<b>24</b>	<b>13%</b>	<b>25%</b>	<b>8%</b>	<b>21%</b>	<b>0%</b>	<b>29%</b>	<b>17%</b>	<b>4%</b>	<b>0%</b>	<b>13%</b>	<b>0%</b>	<b>4%</b>	<b>0%</b>	<b>0%</b>
<b>Education &amp; Professional Studies</b>															
Counseling and Family Therapy	10	20%	40%	30%	10%	0%	30%	0%	0%	0%	10%	0%	0%	0%	0%
Educational Leadership	10	30%	20%	50%	0%	0%	0%	0%	0%	0%	0%	0%	0%	0%	0%
Nursing	3	0%	33%	33%	0%	0%	0%	0%	0%	0%	0%	0%	0%	0%	0%
Physical Education & Human Perform.	15	40%	33%	47%	0%	0%	13%	0%	0%	13%	7%	0%	0%	0%	0%
Reading and Language Arts	13	8%	15%	38%	0%	0%	15%	0%	0%	31%	0%	0%	0%	0%	0%
Social Work	13	38%	69%	8%	0%	0%	38%	0%	0%	8%	0%	0%	0%	0%	0%
Special Education	2	0%	0%	0%	0%	0%	0%	0%	50%	0%	0%	0%	50%	0%	0%
<b>Subtotal</b>	<b>122</b>	<b>28%</b>	<b>32%</b>	<b>55%</b>	<b>1%</b>	<b>1%</b>	<b>11%</b>	<b>0%</b>	<b>2%</b>	<b>7%</b>	<b>2%</b>	<b>0%</b>	<b>1%</b>	<b>0%</b>	<b>0%</b>
<b>Engineering &amp; Technology</b>															
Biomolecular Sciences	10	0%	0%	70%	0%	0%	30%	0%	0%	0%	0%	0%	0%	0%	0%
Computer Electronics & Graphics Tech.	1	0%	0%	0%	0%	0%	0%	0%	0%	0%	0%	0%	0%	0%	0%
Engineering	7	14%	14%	14%	0%	0%	29%	14%	0%	29%	0%	0%	14%	0%	0%
Manufacturing & Construction Mgmt.	4	25%	25%	25%	0%	0%	50%	25%	0%	0%	0%	0%	0%	0%	0%
Technology & Engineering Education	1	100%	100%	0%	0%	0%	0%	0%	0%	0%	0%	0%	0%	0%	0%
<b>Subtotal</b>	<b>23</b>	<b>13%</b>	<b>13%</b>	<b>39%</b>	<b>0%</b>	<b>0%</b>	<b>30%</b>	<b>9%</b>	<b>0%</b>	<b>9%</b>	<b>0%</b>	<b>0%</b>	<b>4%</b>	<b>0%</b>	<b>0%</b>
<b>Academic Departments Subtotal</b>	<b>365</b>	<b>24%</b>	<b>26%</b>	<b>32%</b>	<b>4%</b>	<b>2%</b>	<b>26%</b>	<b>4%</b>	<b>5%</b>	<b>7%</b>	<b>2%</b>	<b>1%</b>	<b>1%</b>	<b>0%</b>	<b>0%</b>

School/Dept , Division/ Unit	Activities (N)	Local					State			National			International		
		Small Community-Based Groups	Non-profits	Pre K-12 Schools	Businesses	Government Offices/ Agencies	Regional Non-profits	Mid-size businesses	Government Offices/ Agencies	Non-profits	Businesses/ Corporations	Government Offices/ Agencies	Non-profits/ NGOs	Multinational Corporations	Government Offices/ Agencies
<b>Administrative Units and Offices</b>															
<b>Academic Affairs</b>															
Center for Advising & Career Explor.	7	57%	29%	14%	29%	0%	43%	14%	29%	0%	0%	14%	0%	0%	0%
Center for International Education	9	44%	22%	33%	22%	0%	11%	0%	0%	11%	0%	0%	33%	11%	33%
Office of Institutional Research & Assmt.	4	0%	0%	25%	0%	25%	50%	0%	50%	75%	0%	50%	25%	0%	25%
Provost's Office	3	33%	67%	0%	0%	33%	0%	0%	0%	0%	0%	0%	0%	0%	0%
Sch. of Arts & Sciences, Dean's Office	2	0%	50%	50%	0%	0%	0%	0%	0%	0%	50%	0%	0%	50%	0%
Sch. of Educ. & Prof. St., Dean's Office	10	10%	30%	60%	0%	10%	40%	0%	0%	0%	0%	0%	0%	0%	0%
School of Engineering and Technology	4	0%	0%	100%	0%	0%	50%	0%	0%	0%	0%	0%	0%	0%	0%
University Learning Center	1	0%	0%	100%	0%	0%	0%	0%	0%	0%	0%	0%	0%	0%	0%
<b>Subtotal</b>	<b>40</b>	<b>25%</b>	<b>25%</b>	<b>43%</b>	<b>10%</b>	<b>8%</b>	<b>30%</b>	<b>3%</b>	<b>10%</b>	<b>10%</b>	<b>3%</b>	<b>8%</b>	<b>10%</b>	<b>5%</b>	<b>10%</b>
<b>Administrative Affairs</b>															
Department of Athletics	9	0%	44%	0%	0%	11%	0%	0%	0%	33%	11%	0%	0%	0%	0%
Office of Environmental Health & Safety	1	0%	0%	0%	0%	0%	0%	0%	100%	0%	0%	0%	0%	0%	0%
<b>Subtotal</b>	<b>10</b>	<b>0%</b>	<b>40%</b>	<b>0%</b>	<b>0%</b>	<b>10%</b>	<b>0%</b>	<b>0%</b>	<b>10%</b>	<b>30%</b>	<b>10%</b>	<b>0%</b>	<b>0%</b>	<b>0%</b>	<b>0%</b>
<b>Extra-Divisional Units</b>															
Ctr. for Public Policy & Social Research	15	7%	7%	27%	0%	13%	33%	0%	40%	0%	7%	20%	7%	0%	0%
Institute for Municipal & Regional Policy	17	24%	53%	6%	0%	18%	12%	0%	59%	0%	0%	0%	0%	0%	0%
Institute for Technology & Business Dev	17	24%	18%	29%	35%	12%	12%	24%	18%	0%	0%	0%	0%	0%	0%
<b>Subtotal</b>	<b>49</b>	<b>18%</b>	<b>27%</b>	<b>20%</b>	<b>12%</b>	<b>14%</b>	<b>18%</b>	<b>8%</b>	<b>39%</b>	<b>0%</b>	<b>2%</b>	<b>6%</b>	<b>2%</b>	<b>0%</b>	<b>0%</b>
<b>Information Technology</b>															
Instructional Design & Tech Res Ctr	3	33%	0%	33%	0%	0%	0%	0%	33%	0%	0%	0%	0%	0%	0%
User Support	1	0%	100%	100%	0%	0%	0%	0%	0%	0%	0%	0%	0%	0%	0%
<b>Subtotal</b>	<b>4</b>	<b>25%</b>	<b>25%</b>	<b>50%</b>	<b>0%</b>	<b>0%</b>	<b>0%</b>	<b>0%</b>	<b>25%</b>	<b>0%</b>	<b>0%</b>	<b>0%</b>	<b>0%</b>	<b>0%</b>	<b>0%</b>

School/Dept , Division/ Unit	Activities (N)	Local					State			National			International		
		Small Community- Based Groups	Non-profits	Pre K-12 Schools	Businesses	Government Offices/ Agencies	Regional Non- profits	Mid-size businesses	Government Offices/ Agencies	Non-profits	Businesses/ Corporations	Government Offices/ Agencies	Non-profits/ NGOs	Multinational Corporations	Government Offices/ Agencies
<b>Student Affairs</b>															
Counseling & Wellness Center	3	33%	0%	0%	33%	0%	33%	0%	0%	0%	0%	0%	0%	0%	0%
Department of Residence Life	22	9%	41%	18%	5%	0%	14%	0%	0%	9%	0%	0%	9%	0%	5%
Office of Student Conduct	9	22%	44%	0%	0%	11%	11%	0%	0%	0%	0%	0%	0%	0%	0%
Pre-Collegiate and Access Services	14	21%	0%	36%	0%	43%	7%	0%	0%	0%	0%	0%	0%	0%	0%
Student Activities and Leadership Dev.	10	30%	20%	30%	0%	0%	10%	0%	0%	20%	0%	0%	0%	0%	0%
Student Affairs Office	4	0%	50%	75%	0%	0%	0%	0%	0%	0%	0%	0%	0%	0%	0%
Student Center	2	50%	50%	50%	0%	50%	0%	0%	50%	100%	0%	50%	0%	0%	0%
<b>Subtotal</b>	<b>64</b>	<b>19%</b>	<b>28%</b>	<b>25%</b>	<b>3%</b>	<b>13%</b>	<b>11%</b>	<b>0%</b>	<b>2%</b>	<b>9%</b>	<b>0%</b>	<b>2%</b>	<b>3%</b>	<b>0%</b>	<b>2%</b>
<b>Administrative Units and Offices Subtotal</b>	<b>167</b>	<b>19%</b>	<b>28%</b>	<b>27%</b>	<b>7%</b>	<b>11%</b>	<b>17%</b>	<b>3%</b>	<b>16%</b>	<b>8%</b>	<b>2%</b>	<b>4%</b>	<b>4%</b>	<b>1%</b>	<b>3%</b>
<b>Grand Total</b>	<b>532</b>	<b>22%</b>	<b>27%</b>	<b>30%</b>	<b>5%</b>	<b>5%</b>	<b>23%</b>	<b>4%</b>	<b>8%</b>	<b>7%</b>	<b>2%</b>	<b>2%</b>	<b>2%</b>	<b>0%</b>	<b>1%</b>

## Appendix: Inventory of Community Engagement Activities

### School of Arts & Sciences

#### Anthropology

- Adams, A.: Developed FYE Civic Learning Community
- Perry, W and Woodruff, J.: Collaboration with Leadership Preparatory Academy, Hartford
- Perry, W and Woodruff, J.: Consulted for National Park Service regarding New York African Burial Ground
- Perry, W., Sawyer, G., and Woodruff, J.: Archaeology project on two home sites of Black Governors with Kellogg Nature Center, Derby
- Perry, W., Sawyer, G., and Woodruff, J.: Consulted for Harlem African Burial Ground project, NYC
- Perry, W., Sawyer, G., and Woodruff, J.: Partnership with Friends of the Freeman Houses, Bridgeport
- Perry, W.: Board of Directors for Webb/Deane/Stevens Museum Complex, Wethersfield
- Phillips, E.: Community workshop, "Preparing for College," for Caryville, FL students
- Phillips, E.: Volunteer work with Spanish Speaking Center in New Britain
- Phillips, E.: Work with Bristol Community Organization
- Phillips, E.: Work with TRYBE, non-violence training program for youth in Central CT
- Ten public presentations

#### Art

- Alewitz, M.: Mural Slams, this is a living organic art program that brings community artists together in a one-day informal competition. For the mural slam, each participant is assigned a four-by-twelve foot space to paint in; this year's participants had to cover last year's work with white paint before starting their own pieces
- Broadus-Garcia, C.: Creating a Sense of Place: A Collaborative Learning Experience at the Hill-Stead Museum. A culminating art exhibition took place in the Inner Gallery of the CCSU Chen Art Center from September 17 - October 15, 2009. The exhibition featured student works produced at the Hill-Stead during spring and summer 2009 semesters and two works by CCSU Adjunct Professor, Terry Feder. The exhibition opening reception held September 17, 2009, was well attended by CCSU students and families, faculty, and members of the local arts community in attendance
- Broadus-Garcia, C.: Exhibition of Student Work at Hill-Stead Museum, During the exhibition period, grant funding provided for the display of two students works at the Hill-Stead Museum - works by CCSU Art Education Graduate students, Susan Gudat and Elizabeth Finnegan. (The works were created at the Hill-Stead Museum during Professor Siporin's class in summer 2009.) This is the first time in Hill-Stead Museum's history that works outside of their permanent collection were permitted for display in the house. Museum interpreters (docents) were instructed as to how to present the works to public visitors during regular museum tours. Subsequently, a planning meeting with Hill-Stead Director, Sue Sturtevant; Hill-Stead Director of Education and Curatorial Services, Cynthia Cormier; Grant Manager, Dr. Cassandra Broadus-Garcia; CCSU Graduate Dean, Dr. Paulette Lemma; and CCSU Provost, Dr. Carl Lovitt was held. In this meeting, discussions about continued collaborations were discussed and the possibilities of involving other departments in work with the Hill-Stead, including but not limited to the Departments of English and Biology. Dr. Lovitt expressed an interest in inviting

- the Hill-Stead Museum to be a part of CCSU's University/Museum/Community Collaborative
- Butler, J.: Internships - Interns placed in the Jefferson Elementary School building for 2009-2010 from CCSU
- Butler, J.: National Art Education Association, Mural Project, Baltimore, MD
- Butler, J.: Naylor School, Hartford, CT. Collaborative Mural Project
- CCSU "Take Your Daughters and Sons To Work Day" - Thursday, April 22, 2010:
- Edwards, T.: Provided assistance to New Haven Symphony Art Director for conversion of a Barn in Guilford, CT to a music school and performance venue
- Garcia, V.: Organize and participate in Simsbury CT first Annual Open Studio Tour
- Garcia, V.: Ten workshops and/or presentations in public schools
- Langhorne, E.: Began in Fall 2009 the organization of Izzy the Frog in Lumina Land and Izzy the Frog in Park River Watershed exhibitions, which will deal with ecology, sustainability, and water stewardship. Holding a brainstorming meeting in December, I enlisted the participation of our art education and sustainability expert Jerry Butler and organized the contributing and interdisciplinary collaboration of the Biology Department and HALS middle school. Izzy the Frog will serve as a "preview" to the water focus of the CCSU GESAC Sustainability Conference April 2011, and the Spring 2011 UMC [University Museum Community] New Britain Collaborative water theme
- Marshall, C.: Member of the Board of Directors and Chair person of the Downtown Gallery sponsored by Greater New Britain Arts Alliance, CT and the Downtown Visitors Center. The purpose of the Downtown Gallery is to provide a gallery space where artists' work can be experienced and marketed in order to help promote the creative, performing and visual arts, to nurture individual creative abilities, and to promote the economic health and quality of life of downtown New Britain
- Saturday Art Workshop for Children: This workshop is offered to students of the surrounding areas, ages 5-17, and held in Maloney Hall on the CCSU campus. Art Education students serve as instructors, thus giving them guided practicum experience in working with students and a beginning opportunity to test out their teaching skills. The culminating activity each semester includes an art opening and reception in which student work is displayed and parents and friends attend to see student work displayed in a professional manner. The Art Department hosts this reception each semester and the work livens up the hallways with work of prospective young artists
- The Department of Art participated in this annual event by sponsoring a workshop in Maloney Hall for participants, ages 4-7. The workshop entitled "Art World" was conducted by Art Education Graduate Assistant, Sarah Lefrancois, and provided participants with a hands-on art activity. Numerous email commendations from the CCSU community included, "And I want to share my thanks and gratitude for your hard work, support, and dedication. My daughter LOVED the day! Each year – about January – she asks me when "Take you Sons and Daughters to Work Day" is. We look forward to it each year." Another faculty member wrote, "Thank you to everyone responsible for making yesterday possible. My daughter Mattie was with the 5-7 year olds and while she may have been the youngest in the group, she really enjoyed her first Take Your Daughters and Sons to Work Day. She enjoyed it so much, she wanted to come back today! You all really did such a great job! I really enjoyed being able to show her around campus and spending the day with her."

## **Biology**

- Halkin, S.: Wrote Scene at CCSU article published Feb. 22, 2010 in the New Britain Herald: Biology, Art Students Gain Hands-on Experience in the Field, about summer programs I teach abroad with Muriel Miller
- Jackson, M.: Internships - Interns placed in the Jefferson Elementary School building for 2009-

2010 from CCSU

- Krans, J.: Presented an insect demonstration for Mill River School Kindergarten
- Mione, T.: Presentation “You say tomato, I say Jaltomata” to students at Carmen Arace Middle School, Bloomfield CT, 12 June 2009
- Mione, T.: Presentation to Families at Mystery Night at The Children’s Museum, West Hartford, CT, September 2009. Title: DNA Forensics
- Nicholson, B.: Served on the Bank of America, Bruce Mahan Scholarship Advisory Committee which reviews and awards high school and University students in the New Britain and Berlin areas of Connecticut with the Bruce Mahan Scholarship. Service 2007-2009
- The Biology Department sponsored a Career Fair in the Fall 2009 and Spring 2010 in which representatives from industry and various government agencies presented to approximately 40 CCSU students.

## **Chemistry & Biochemistry**

- Burkholder, T., Watton, S., Crundwell, G., Glagovich, N.: Involved in the “Health Sciences Initiative” for Sports and Medical Sciences Academy (a magnet high school in Hartford, CT) school students
- Crundwell, G. : Presented at “CCSU Night at Holmes School” making slime with K-2 graders
- Crundwell, G., Burkholder, T.: Involved with “Partners in Science”, Saturday morning hands-on workshops for regional middle school students
- Jones, C. : Co-led a workshop at the Take Your Sons and Daughters to Work Day, April 21, 2010 at CCSU titled: Polymers
- Jones, C., Brown-Wright, G.: Led a workshop at the Girls & STEM Expo, April 1, 2010 at CCSU titled Chemistry: Oh So Beautiful; Oh So Sweet

## **Communication**

- Fitzgerald, G.: Communication Audit - DATTCO Bus
- Fitzgerald, G.: Delivered presentation on generalization differences in Communication styles to employees of the Department of Transportation
- Fitzgerald, G.: Service Learning - Boys and Girls Club of New Britain, Friendship Center
- Fitzgerald, G.: Service Learning - New Britain, Alzheimer’s Association of CT; Veterans History Project, CCSU
- INSTITUTE FOR MUNICIPAL AND REGIONAL POLICY - PSA PRODUCTION In January of ‘10, I directed an audio piece for public presentation at IMRP’s YOUTH OF INCARCERATED PARENTS CONFERENCE. This piece has been used in multiple trainings on Youth Of Incarcerated Parents across the state. <http://www.envisionfilms.org/yipf.mp3>
- Koteen, L.: Students in her Comm. 508 graduate class worked with area organizations to create public relations plans. These included the Boys and Girls Club of Wallingford, new shoreline American Red Cross, Middlesex Chapter of the American Red Cross, Manchester Community College Department of Alumni Affairs, YMCA of Southington and Middletown Recycling Center’s Swap Shack.
- Mendez, S.: Continued doing public work with several non-profit organizations based in Hartford
- Mendez, S.: Served on a panel to advise the Connecticut Health Foundation on the redesign of their website
- PRODUCED HARTFORD VETERAN’S DAY PARADE PUBLIC SERVICE ANNOUNCEMENT ‘09
- PRODUCTION IN THE COMMUNITY – FILMMAKING/VIOLENCE PREVENTION COLLABORATION BETWEEN The Department of Communication, Institute For Municipal

and Regional Policy, The Wadsworth Atheneum, Peace Builders (Gang Prevention Program), The Hartford Police Department, Mothers United Against Violence, Sodexo, Caribbean Center, Diversity Grant and the Community Engagement Committee. The results of this project were shown at the Wadsworth Atheneum – Summer 09 [www.envisionfilms.org/PIC/PIC.html](http://www.envisionfilms.org/PIC/PIC.html)

- Ritzenhoff, K.: Internships - Interns placed in the Jefferson Elementary School building for 2009-2010 from CCSU
- Ritzenhoff, K.: Karen Ritzenhoff continues to serve as the Coordinator for the University-Museum-Community (UMC) New Britain Collaborative and directed several interdisciplinary meetings. The next event will be the “CCSU Night at the Museum” in March 2011.
- Teitler, J.: PRODUCED STATE CENSUS CAMPAIGN UTILIZING FILM STUDENTS – In Collaboration with the Governor’s Complete Count Committee and the CSU systems office. These PSA’s were broadcast and streamed throughout the web and television.

## **Computer Science**

- Kjell, B.: Continues as a Program Evaluator in Computer Science for the Computer Accreditation Commission of ABET
- Kjell, B.: Continues as a reader for the Advanced Placement test in computer science
- Kjell, B.: On the Board of Governors for the Society on the Social Implications of Technology (SSIT) of the IEEE (thru December 2009)
- Kjell, B.: Served on a committee of the Consolidated School District of New Britain that selected a new Director of MIS. (November 2009)
- Kurkovsky, S. : Principal investigator for a National Science Foundation grant, “STEM Scholarship Program,” \$478,302, 2006-2011, which funds scholarships for students (mostly local) studying math, science, and computer science
- Syta, E.: Arranging for student internships with the Connecticut State Police Computer Crimes and Electronic Evidence Unit.
- The CS department hosted four meetings of the Computer Science Teachers Association, Connecticut (CSTA-CT), an organization interested in K-12 teaching. The group has about 20 active members from schools across Connecticut.
- The department continues to host a web site that provides open access to educational material in computer science. The material is used by several local high schools (as well and many others).

## **Criminology**

- CJ 597 Agency Collaborative Project: Preparation of a research project within a criminal justice agency under the supervision of an agency and faculty advisor. The research project may be initiated by the agency or the student, and may involve such activities as program development, program evaluation, and instrument validation. Major research paper required upon completion of the agency project. Approximately 6 graduate students conducted agency collaborative projects
- CRM 435 Supervised field studies in Criminal Justice: Internship placement in a criminal justice setting under faculty direction and supervision. Corresponding class meeting and assignments are also required. Over 90 students participated in the supervised field studies course
- During the past year, faculty members have been actively involved in a range of research and evaluation projects with criminal justice agencies and programs in Connecticut. Below are some examples: Police activities league Waterbury, Connecticut Department of Mental Health and Addictions Services, Court Support Services Division, Criminal Justice Planning Action Committee, The Connection Incorporated, The Connecticut Department of Correction, The Hartford Re-entry Council

- Faculty volunteer their time on local boards and non-profit organizations. Below are some examples: Adult Risk Reduction Center, Wheeler Clinic, Plainville, CT Advisory Board, Immanuel Missionary Baptist Church. New Haven, CT.

### **Design (Graphic / Information)**

- Vial, S.: 9 students provided design work for CCSU / Webster Bank – 3rd Annual Taste of Central Connecticut Poster
- Vial, S.: 9 students provided design work for CCSU Center for Public Policy – Program Brochure
- Vial, S.: 9 students provided design work for CCSU Center for Public Policy – Veterans History Project Brochure
- Vial, S.: 9 students provided design work for CCSU Counseling and Wellness Center – “Things to Do ”Draw-string Bag”
- Vial, S.: 9 students provided design work for CCSU Counseling and Wellness Center – Town /Gown Logo
- Vial, S.: 9 students provided design work for CCSU Doris Honig Guenter Women and Film Festival – Poster and Brochure
- Vial, S.: 9 students provided design work for CCSU Latino / Latin American and Caribbean Center – Logo, Letterhead and Brochure
- Vial, S.: 9 students provided design work for Connecticut Young Writers - Logo and Support Materials
- Vial, S.: 9 students provided design work for CSUS Catalyst for Connecticut - Logo and Brochure
- Vial, S.: 9 students provided design work for CSUS System Open House - Posters (5 sets)
- Vial, S.: 9 students provided design work for Henry Barnard Awards - Logo and Invitation
- Vial, S.: 9 students provided design work for Milford Prevention Council - Logo

### **Economics**

- Kim, K.: Chairman, the Atsurgi (Japan) - New Britain Sister City Committee
- Kim, K.: Member, New Britain Sister City Board of Directors
- Liard-Muriente, C.: Associate Director of the Latin American, Latino and Caribbean Center
- Liard-Muriente, C.: IE Faculty Liaison to CCSU Universities Abroad
- Liard-Muriente, C.: Member, Advisory Board for Latino Studies
- Liard-Muriente, C.: Member, Board of Directors of the Northeast Business and Economics Association
- Liard-Muriente, C.: Member, Board of Directors of the World Affairs Council of Western Massachusetts
- Liard-Muriente, C.: Member, Latin American Area Studies Committee
- Loughlin, J. : Corporator, Boys and Girls Club of New Britain
- Osoba, B.: Member, Operations Committee, United Way of Central and Northeastern Connecticut
- Osoba, B.: Taught three separate modules – on economic development, public finance, and economic forecasting – in a training program run by the Center for Public Policy and Social Research for local government officials from Oyo State in Nigeria.

### **English**

- Gigliotti, G.: Musical: Letters to Daddy at Holmes Elementary
- Gigliotti, G.: Organized and hosted "Friday with Ava: The Ava Gardner Film Series," sponsored by the CCSU Alumni Association

- Pozorski, A. : Aimee Pozorski organized “CCSU at Holmes Elementary School” Night in April 2010, a chance for students in 3rd, 4th, and 5th grades to see what a college class is like
- Pozorski, A. : Sigma Tau Delta, the English Honors Society, in coordination with the Golden Key Society, held its second annual Book Bask at Gaffney Elementary School, giving each elementary school student a free book
- Urbanski, H.: Worked with New Britain High School students, and CCSU teacher ed. Candidates, in the second year of the Bridges Program

## Geography

- Button, C.: GEOG 542/442 (Geography Field Methods, Dr. Button) 16 students. Students performed assessment natural resource and land use; and drafted a Park Management Plan for Wintergreen Woods in Wethersfield. Dr. Button and his students received a ‘proclamation’ from the Mayor for their contributions to Wethersfield. Button, Charles E., Aaron Budris, Sareoun E, Marwin Gonzalez, Melissa Pierce, Chris White, Tracy DeGrazia, Joshua Finnie, Bryan Pavlik, and Teri Powell. 2009. Existing Land Use and Natural Resources Inventory of Wintergreen Woods. Prepared for Wethersfield Town Council, Conservation Commission, and Parks & Recreation Commission.
- Houser, P. : The Environmental Planning course (Geog 445/518, Dr. Houser): Research Paper: A major assignment required for all students was to research, write a paper, and present a PowerPoint overview of a land use case study (from the last ten years) in a Connecticut town. Students took on a range of developments—from small subdivisions to major commercial complexes and transportation infrastructure. In each case they identified the environmental regulations which came into play, the process followed to create the project, the involved agencies and, ultimately, they evaluated the environmental impacts of the project. Field Trip to New York City: Our full-day field trip was titled “Sustainable New York City.” We spoke with community leaders (one a president of a successful Manhattan Business Improvement District and one the director of recycling, compost and waste management for the lower East Side (‘largest operation of its kind in the City)). Additional Guest Speakers: During the spring 2010 semester, the Environmental Planning class hosted two speakers. Mr. Dominic Forcella—CCSU Dept. of Env. Health and Safety –on the topic of the role of the engineer in environmental planning. Mary Rickel Pelletier—Director, Park River Watershed Revitalization Initiative
- Houser, P. : The Geog 483/514 (Topics in Planning: Master Plans in Connecticut, Dr. Houser) was based on the idea of learning from the community and, ultimately, contributing the community’s understanding of planning issues. Learning from the community/identifying challenges in the local communities: We began by using the nearby Town of Newington--- which was in the process of updating its master plan (plan of conservation and development) – as a case study. We studied their proposed plan and learned about controversies associated with certain aspects of that plan; students attended town meetings, reported on current zoning practices in Newington—going out and photographing what could be found in different zones—and the class spoke with two officials at the town center in Newington (Thomas Bowen, Chairman of the Conservation Commission, and Ed Meehan, the Newington Town Planner). Much of the rest of the course was spent exploring the content of comprehensive plans—and the process of planning in Connecticut and elsewhere, through field trips, guest speakers, lecture and readings. Guest Speakers in this class, in addition to the above were: Dr. Richard Bachoo, CCSU administrator—on the topic of the CCSU expansion plans in Newington, Mr. William Voelker, Town Planner of Cheshire, Ct.—on the topic of Comprehensive planning in Ct., Malinowski (he led us on a walking tour of downtown New Britain)—on the planning challenges New Britain is facing., Mr. Will Lorenz, Manager of Blueback Square, West Hartford, on the viability of mixed commercial developments in

today's market. Contributing to the community—The class blog—has postings which can help explain aspects of planning to the community. These were student assignments—but written for a lay audience. Students have decided to keep contributing to this blog over the summer. See: <http://pocdplanningclass.blogspot.com/>. Advice to Conservation Commission Chair—At a meeting that I attended with my students, the Chair of the conservation commission in Newington asked for information he could use at a state hearing the next day. After a short discussion, I agreed to send him some “talking points” about the importance of maintaining tree cover on the top of a controversial development site.

## History

- Glaser, L.: For Local History, students researched, wrote, and developed an encyclopedia-style history of the New Britain Public Works Department and all of the city's utilities. We worked with Mark Moriarty who acted as a “client” for which the students wrote and submitted their final essays on topics like electrical power, sewers, refuse management, transportation, and telecommunications.
- Glaser, L.: In both the undergraduate and graduate course, Prof. Glaser brought in several speakers from various levels of the state of Connecticut's historic preservation community as well as the campus community to share their professional experience as well as explain the respective roles of their organizations and professions. These visits help strengthen the ties between CCSU's Public History program to the professional community and other departments on campus. I also directed several internships, capstone projects and a Master's thesis on urban renewal in New Haven.
- Glaser, L.: In the Public History graduate class, we use the Harriet Beecher Stowe Center as a client for whom to write an administrative history (final project).
- Glaser, L.: Leah Glaser has been establishing community partnerships through internships and has continued to seek ways to connect her courses to both the campus and New Britain through themes and assignments that emphasize community engagement
- Greenfield, B.: Connecticut Heritage Revitalization Fund Review Board: Review and award grants that promote organizational stability and sustainable growth in Connecticut heritage organizations with targeted funding that encourages audience-focused business plans and public programming
- Greenfield, B.: Encyclopedia of Connecticut Culture Online Oversight Committee: Committee overseeing the construction of an authoritative and comprehensive resource on Connecticut History that includes period and thematic essays, town histories, and more than 350 individual entries with digital media from the state's major archival repositories
- Greenfield, B.: Heritage Advisory Committee: Oversee and create content for an online Heritage Resource Center designed to support organizational stability and growth by supplying museum professionals with readings, articles, case studies and white papers that explore "best practices" in the museum field. See my blog entries at: [http://www.ctculture.org/chc/program\\_resources/hrc/](http://www.ctculture.org/chc/program_resources/hrc/)
- Greenfield, B.: Prof. Greenfield has also worked on the Connecticut Historical Society and Museum's De-accession Task Force Member, Winter 2009-Present, and Collections Steering Committee, Summer 2009- Present, and has done related committees assessing museum collections for their historical and aesthetic value, condition, and relevance to the museum's mission. Through the work of selective acquisition and de-accession, we work to refine the museum's mission and support financial stability
- Greenfield, B.: Prof. Greenfield has been a board member on the Connecticut Humanities Council from Fall2008 to the present
- Greenfield, B.: Prof. Greenfield is also a member of the editorial team of Connecticut Explored, a quarterly magazine of Connecticut's history, culture, and the arts that explores the region's

- cultural heritage with the aim of revealing connections between the past and present
- Mahoney, M.: Prof. Mahony established relationships for the Committee with the Peruvian and Brazilian consulates in Hartford
  - Tully, J.: Prof. Tully was the Academic Director of AMERICAN VOICES, and was responsible for the overall conception and operation of a three-year, \$965,000 U.S. Department of Education “Teaching American History” grant
  - Warshauer, M. and Tully, J.: CT and the Civil War: Middle and high school Teachers work on curriculum with CCSU faculty with the focus on the Civil War using primary sources on the role of New Britain in the Civil War. Students will do archival research then present their research.
  - Wolff, R.: Prof. Wolff also gave four presentations for area teachers on “Slavery in the Americas” under the auspices of our TAH grant (April-June 2010)
  - Wolff, R.: Prof. Wolff gave public lectures on: “Slavery and Abolition” for the UCONN Adult Learner Program (December 2009) and Temple Beth Israel in West Hartford (February 2010); “The Amistad Remembered” at the Old State House, Hartford, plus related interview on the Colin McEnroe Show on CT public radio (February 2010)

### **Mathematical Sciences**

- CCSU has run the CAMPY program for middle school students for a number of years now, with many faculty participating. CAMPY is The Connecticut Association of Mathematically Precocious Youth. This year we have 182 middle school students attending 10 workshops on May 26th
- CCSU Math 113: Math for CCSU students who wish to be elementary school teachers. Observe math classes at the elementary level; also, interview 6th grade Global Academy students to see what they think of mathematics. It also gives the Global students the opportunity to be in contact with university students.
- We have been very active with the BRIDGES program to try and help high school students from New Britain succeed in college.

### **Modern Languages**

- Fourth Annual MLD Conference for Language Teachers: Purposes and Pleasures of Foreign Language Learning. We had close to 200 FL teachers from across CT and neighboring states.
- In December 2009, the MLD organized the event “The Modern Language Department Welcomes the Community”. We had film screenings, information about study abroad opportunities, talks by students who are using their FL expertise in the community, talks about grants and funding opportunities for work and study opportunities abroad, etc.
- In preparation of our Celebrating Foreign Languages, ML students in several classes were encouraged to create books and cultural materials that will be donated to local schools.
- Several MLD faculty are members of cultural organizations (i.e. CT COLT) and collaborate actively in program evaluations, consulting, giving workshops and overall outreach.
- The MDL organized “An Evening of Networking”, a reception honoring MLD alumni who are making exemplary contributions in the community.
- Three Chinese students have been selected to work as summer interns with the Glastonbury Public Schools. Their responsibilities include assisting teachers in class preparation, class management, cultural activities, and other minor administrative tasks.
- Wu, T.: Continues to work as faculty liaison for the Chinese Cultural Center
- Wu, T.: Training Glastonbury school teachers on how to use Movie Maker, Photo Story 3, create a blog and ePortfolio

## Music

- Concerts with University Singers in the CT area this year included 3 concerts in New Britain, one in Hartford, and a featured concert on the artist series of the Trinity Episcopal Church in Newtown, CT. Over 16 CCSU students were involved.
- Kershner, B.: Dr. Kershner composed a short work for reed trio, which was performed on the local television broadcast known as "Better Connecticut Live." The hosts also interviewed him and the group during the broadcast.
- Knox, C.: Dr. Carl Knox taught band and jazz band 5-12 at The Master's School in Simsbury, CT.
- Menoche, C.: Dr. Charles Menoche (in collaboration with Ron Todd of the Art Department) created and installed "Meldings: An Audio/Visual Installation" (noted above): opening on 12, March 2010 ran through 17, April 2010 in the Downtown Gallery (New Britain, CT).
- Perry, P., D'Addio, D.: In April 2010, Dr. D'Addio and Dr. Perry hosted 200 students from Pomperaug Regional High School for a day of music-making.
- Perry, P.: As the director of University Singers, Dr. Perry established a partnership with the celebrated VOCE professional choir. In May, 2010, four chosen University singers were "Choral Scholars" and one University Singer was a "Conducting Scholar" and all participated in a concert in Hartford, May 16, 2010 – attended by 500 audience members. Over 16 CCSU students were involved.
- Ribchinsky, J.: Professor Ribchinsky coached a trio of High School musicians who were finalists in UCONN Chamber music competition-March 29, 2009
- Ribchinsky, J.: Professor Ribchinsky organized and hosted CCSU Orchestra Day with students from area High Schools for a daylong workshop, October 23
- Seddon, T. : The Marching Band, under the direction of Dr. Thomas Seddon, performed at the following community events: Hartford Veteran's Day Parade (2009), Cheshire High School Marching Band Show (2009), Southington High School Marching Band Show (2009), Rocky Hill High School Marching Band Show (2009), USSBA New England State Championships (2009). Over 100 CCSU students were involved at each performance.
- The Connecticut Trio: concerts at The New Britain Museum of American Art and Mitchell College during March 2010.
- The Department of music is working with Dr. Ritzenhoff and members of the committee of New Britain Museum of American Art toward a special production in April 2011.
- University Singers hosted an annual "Choral Invitational Festival in November 2009. Over 16 CCSU students were involved.

## Philosophy

- Blitz, D.: Served as local host for the Connecticut Filemaker Pro Developers group, which brings together small business and independent database designers
- Blitz, D.: Served as local host for the CT Blue Print group, which developed short term and long term proposals for the budget crisis in Connecticut
- Godway, E.: Participates in an educational program for prison inmates
- Iannone, A.: Served on a Hartford-Latin American business committee International Business Council of the Metro-Hartford Chamber of Commerce

## Physics and Earth Sciences

- Antar, Ali: As an extended service to the University, Dr. Antar has been active as a speaker at college campuses, churches, synagogues, mosques, public and private groups, and student clubs. The topics are varied between science, Islam and Muslim world, Arab and Arab world, Middle East and terrorism, and interfaith topics

- Bednarski, M., Jackman, M.: Dissecting cow eyes with 5th grade students in Sarah Johnson's class in Wethersfield, Ct. (2009)
- Bednarski, M., Larsen, K., Thomas, J., Evans, M.: Marsha Bednarski, Kristine Larsen, Jeff Thomas, Mark Evans: Interdisciplinary Science, Inquiry, and Literacy grant (2009-2010) CT State Department of Higher Education Grant.
- Evans, M., Larsen, K.: Judged the "Invention Convention" at Smalley School, March 2010.
- Evans, M.: Hosted two cub scout packs in May 2010 to help them earn their geology belt loop and pin
- Evans, M.: Made a presentation entitled "Geology of Connecticut" to the Women of St. James's group on January 19, 2010
- Evans, M.: Mentored two students from Glastonbury High School (Ann Alampi and Anthony Bishop) in a project to study fluid inclusions in ancient fault rocks in the Hartford basin. The project results were submitted to the National Siemens Science Competition in September 2009
- Evans, M.: Participated in 'meteorite identification day' at CCSU in June 2009
- Larsen, K., Piatek, J., Robinson, C.: The International Year of Astronomy continued through the end of 2009, and Jennifer Piatek, Kristine Larsen, and Craig Robinson, Director of the Copernican Observatory and Planetarium continued their program of free public events in support of the IYA. Since the last annual report was filed, these activities included 6 public lectures, 8 observing sessions, 6 special planetarium shows, and 14 hands-on activities events geared for families. The planetarium shows and 5 of the hands-on workshops centered around the theme of Harry Potter and Astronomy, and were conducted in support of the Elihu Burritt Library's exhibit Harry Potter's World: Renaissance Science, Magic, and Medicine. Another 3 public observing sessions were held in April 2010 to view the planets and the moon.
- Larsen, K.: 14 students enrolled in ESCI 101 The Night Sky FYE course with Kristine Larsen conducted community planetarium shows and observing sessions as a course capstone in Fall 2009.
- Larsen, K.: 24 first year students enrolled in the SCI 111/PSY 236 learning community (Larsen and Andreoletti) were engaged in fifth grade classrooms at Smalley Academy in New Britain. The students taught hands-on science lessons as their SCI 111 capstone activity.
- Larsen, K.: 4 students enrolled in SCI 485 Studies in Science: Science Community Outreach with Kristine Larsen engaged in science-based community outreach projects in the New Britain Public Schools in Spring 2010.
- Larsen, K.: Conducted 4 Partners in Science sessions of hands-on activities for 7th graders at CCSU
- Larsen, K.: Conducted a series of 4 hands-on astronomy activity programs in Springfield, Vermont for children whose parents attended the Stellafane Telescope Making Convention.
- Larsen, K.: Conducted special programs (including planetarium shows, hands-on activities, and observing sessions) at CCSU for groups from Holmes Elementary School (New Britain), John Paul II Catholic School (New Britain), Duffy Elementary School (West Hartford), and Hartford Public High School. She also conducted an astronomy workshop at Holmes School as part of the CCSU Goes to Holmes outreach night, and conducted planetarium shows for the Connecticut Girls and STEM and CCSU Take Your Child to Work days, and for the Wesleyan Upward Bound program.
- Larsen, K.: Held hands-on astronomy activities, planetarium shows, and observing sessions for 5 Cub Scout and Girl Scout groups: 3 held at CCSU (Southington, Cheshire, and Berlin packs), 1 at Camp Workcoeman in New Hartford (for 150 cub scouts), and organized and coordinated the Cub Scout section of the Vermont Jamboree at Springfield, Vermont for 40 scouts
- Larsen, K.: Presented a program on the 2012 Apocalypse Hoax at the Burlington Public Library
- Larsen, K.: Was interviewed by two local high school students, one for a National History Day project and the second for a math careers project

- LeMaire, P.: Peter LeMaire served as judge at Science fair at St. Michael's Academy, Springfield, Massachusetts, April 7- 8, 2010
- Newman, S.: Participated in the Southington Board of Education Science Activity Day in June of 2009
- Robinson, C: In addition to the astronomy outreach done by faculty, Craig Robinson conducted public planetarium shows on the first and third Saturdays of each month (with observing directly afterwards on clear night) in addition to dozens of planetarium shows, observing sessions, and hands-on activities for school groups and community groups. These activities are described each year in the Planetarium's annual report to the Dean of Arts and Sciences
- Sharma, N.: Nimmi Sharma participated in the community-wide Project Kaleidoscope/CCIC Connecticut Higher Education in the Public Square workshop: Taking the Plunge: Next Steps in Engaged Learning, where educators from the Connecticut community meet to share best practices for incorporating pedagogies of engagement into students' educational experiences in the sciences, including hands-on demonstrations of practical methods
- Sharma, N.: Nimmi Sharma presented the potential for CCSU's Laser Radar laboratory to serve as a community resource at the American Chemical Society Northeast Regional Meeting.
- Thomas, J.: Jeff Thomas placed and monitored three teacher candidates to help New Britain elementary school students complete their science fair projects

### **Political Science**

- Petterson, P.: Continued his community work with the CT Blueprint Coalition and the CT chapter of ASPA (see Workforce And State Economic Development, above)
- Smith, R., Petterson, P.: Were part of a group (on the University's Community Engagement Team) that have made substantial progress in developing a Community Engagement minor and certificate program for CCSU. Initial versions of the minor and certificate program were presented to the University Curriculum Committee in draft form and will be refined for formal presentation and consideration in 2010-2011
- Smith, R.: Piloted a community engagement-focused FYE section of PS 110, which she will continue in Fall 2010
- Smith, R.: Presented her ongoing work on civic engagement and pedagogy at the 2010 APSA Teaching And Learning Conference, and will be presenting at the American Democracy Project meeting in providence in June 2010

### **Psychology**

- Andreoletti, C.: Became a member of the Advisory Board of West of Hartford @ Home, a non-profit organization serving the elderly population of Avon, Farmington, and West Hartford
- Andreoletti, C.: Served as a judge for the Invention Convention at Smalley Academy, New Britain
- Andreoletti, C.: Supervised 5 gerontology internships at Hartford Hospital, Water's Edge Center for Health and Rehabilitation (Middletown), Jerome Home (New Britain), Arbor Rose (New Britain), and Elmwood Senior Center (West Hartford)
- Andreoletti, C.: Taught FYE Learning Community for Elementary Education majors who developed and taught science lessons to 4th and 5th graders at Smalley Academy, New Britain
- Austad, C.: Trained students as stress management coaches; gave presentations on campus to students in women's center and at employees day
- Chu, P. : Worked with the Center for Harmony, Northampton, Mass. April 24, 2010 on activities associated with World Tai Chi Day
- Conway, J. : Continued his work with CCSU's Institute for Municipal and Regional Policy on services for children of incarcerated parents
- Conway, J. : Taught PSY 250, the Psychology of Community Service, including a course

- requirement of regular service with a local community partner throughout the semester
- DiPlacido, J.: Sponsored and supervised internships at: UCONN Health Center, working on a Vocational Outcomes Study for at risk youth who have suffered from trauma; Ct. Behavioral Health Partners in Rocky Hill, CT.; Department of Public Health, Office of Government Relations; CT. Department of Veteran Affairs Residential Facility in Rocky Hill, CT; Sexual Assault Crisis Center at YWCA, New Britain, CT.; Wheeler Clinic on the Schools Prevention and Wellness Program, Plainville, CT. Saybrook Health Care Center an assisted living facility for people with dementia and Alzheimer's Disease
  - Donis, F.: Directs the Latino Connecticut College Access and Success Summer program (ConnCAS). The primary goal of this program is to help Latino/a students' transition from High School to College. This program is supported by a \$29,000 grant from the Connecticut Department of Higher education, a \$13,320 grant from the Office of the Vice President for Academic Affairs, and other in-kind contributions from CCSU
  - Donis, F.: Directs the Latino Mentorship Program. Participants in the Latino ConnCAS summer program continue to participate in our mentorship program during their freshmen year
  - Donis, F.: Received the Latino de Oro Award for Life Time Achievement from the Identidad Latina Spanish Newspaper
  - Donis, F.: Serves as Director of the Latin American, Latino and Caribbean Center (LALCC). The LALCC promotes the understanding and the appreciation of the historical, social, and cultural life of Latin American and Caribbean societies and of Latinos in the United States through education, community events, study abroad, international exchange, and community outreach
  - Goldstein, M.: A group of Dr. Goldstein's graduate students are working with the City of Hartford Department of Health and Human Services on a project regarding food security in four neighborhoods in Hartford
  - Goldstein, M.: Continues his work with the Center for Public Policy and Social Research on veterans' needs assessment. They are currently working with Dr. Linda Schwartz, Commissioner of Veterans' Services to conduct a second survey with 10,000 OEF/OIF veterans in CT
  - Goldstein, M.: Serves on the Community Engagement Task Force at CCSU
  - Goldstein, M.: Working with the Center for the Advancement of Youth, Family and Community Services, Inc., the Middletown School System, and the School of Education at CCSU on some earmark legislation titled: Building the Pipeline: Increasing the Number of Minority Students who become Teachers. If funded, the project should: 1. Reduce the number of dropouts in public school; 2. Reduce violence and criminal justice involvement and increase expectations for pro-social behavior and academic achievement; 3. Increase the number of students that go to college and/or successfully enter the world of work; 4. Increase opportunities for minority students to become teachers. This proposal involves a social innovation built on over 30 years of experience and connected to emerging best practices included in the academic literature. It has the potential to dramatically reorient both individuals and institutions to new and more effective ways to help children and address the substantial needs of adults and communities. It has been submitted through Congressman John Larson's Office
  - Holt, S.: Developed the Evaluation Component for the Ridgefield, CT community's Drug Free Communities federal grant application of Ridgefield
  - Sikorski, J.: The Psychology Club, a student organization under the supervision of Dr. Sikorski was actively involved in a series of community activities
  - Waite, B.: Developed a collaborative project designed with colleagues at Connecticut Valley Hospital, a state of CT psychiatric inpatient facility, to pursue novel approaches to promote greater behavioral activation and involvement in therapeutic activities and more positive

outcomes across many functional and health domains in patients with schizophrenia and related disorders. This grant funded media intervention project is being piloted during Spring and Summer 2010 and will be fully operationally in Fall 2010. He also supervised a graduate intern during the Spring semester who is working with CVH staff to implement the project

## **Sociology**

- Adair, S.: A statistical consultant for Kid's Count, a biennial statistical portrait on the health and well being of children in Connecticut. The project is sponsored by the Annie E. Casey Foundation and administered by CAHS.
- Adair, S.: A statistical consultant for the Making Connections Project, which is studying the links between social service agencies, state income supports, economic security and community engagement for low income households. It is administered by the Connecticut Association for Human Services (CAHS).
- Adair, S.: Assisting the Connecticut Coalition to End Homelessness (CCEH) on a plan to revise their methodological strategy for measuring the number of homeless within the state
- Adair, S.: Serves as a member of the Institutional Review Board for the Institute for Community Research (ICR), Hartford, CT.
- Adair, S.: Serves on the University Community Engagement Team and the Search Committee for a new Director of Continuing Education and Community Engagement. He also participated in a subcommittee that drafted a proposal for a new minor and certificate in community engagement.
- Greenebaum, J.: Advisory board for both the Women's Center and the Committee for the Concerns of Women (CCW).
- Kaminski, B.: As Co-Chair of the GLBT advisory board, participated in several activities for the GLBT community. These activities include bringing Gwen Haworth, a transgendered filmmaker, to campus and screening her autobiographical documentary. The Center also sponsored a "campus read" program using the book *Hiding in Hip Hop*, which discusses gay men and the "down-low" phenomenon within the hip hop music industry.
- Mitrano, J.: Served as Research Associate and assisted in developing the list of The Most Literate Cities in America Center for Social Research, Central Connecticut State University
- Pearson, F.: Oversaw the Department's Internship program and taught the associated seminar course. Students engaged in a variety of activities in the following organizations: Connecticut Association for Human Services (CAHS). Connecticut Economic Resource Center (CERC), Connecticut Children's Place, Hospital for Special Care at Riverview Hospital, True Colors, Colt's Manufacturing Company, Central Area Health Education Center, Hartford Public Library: The American Place, and New Hope Manor

## **Theatre**

- CDA (CT Drama association) in attendance at CCSU attending workshops and productions in theatre and dance.
- Delventhal, T.: Improv Olympics—created to allow high school students to learn how to do improv and compete against each other annually. Culminates in an annual event called Laugh with a Purpose that is a fundraiser for Homelessness. The event invites comedy professionals from NYC and LA and is also sponsored by faculty member Thom Delventhal (100-200 Students involved annually)
- Delventhal, T.: Mobiloxyschlock—a group of students sponsored by the theatre department who create opportunities for students to do improv around a number of issues. Performs throughout the year. This year became an official SGA sponsored organization---Thom Delventhal is faculty sponsor (50-100 students involved annually)

## **School of Business**

### **Accounting**

- Durant, M.: Presentation to the Greater Hartford chapter of the American Society of Women Accountants on the topic of new developments in Taxes for Small Businesses, Partnerships, S Corps, and LLCs. February, 2010. The presentation ran about 45 minutes, followed by a question and answer period. I'm told there were very good reviews.
- Shakun, H.: Presentation at East Granby High School on Careers in accounting and the education required. He discussed career opportunities, CPA exam requirements and what to expect from a college business school. November 12, 2009
- The Accounting Society mobilized VITA student volunteers to assist in tax return preparation throughout Connecticut. A total of 25 students were trained by IRS personnel in the Fall 2009 semester and 17 were trained in the Spring 2010 semester. Of these, 26 students volunteered a range of 6 to 30 hours each during the tax season spanning January 1 – April 15, 2010. One student Lori Maznicki, worked as a VITA area coordinator at Manchester Community College, and for one student, Dustin Johnson, this was his second tax season as a VITA volunteer

### **Finance**

- Boston Business Field Trip was organized in April, 2010 where students were provided the opportunity to visit: Federal Reserve Bank of Boston, Northfield Information Services
- Farhat, J.: As part of our University outreach mission, our faculty are involved in a wide variety of outreach activities: Dr. Farhat offered a workshops in Financial Literacy for Middle School Students – Lecture, “College Day “– as a part of the Personal Financial Planning Community Engagement Program .
- Farhat, J.: Hosted a talk by Steve Forbes and moderated a question and answer period for invited School of Business students
- Marquette, C.: Volunteer for the Jaycees fundraiser "The Great Taste"
- NYC Business Field Trip was organized in October, 2009 where students were provided the opportunity to visit: Council on Foreign Relations, NYSE Euronext, Bloomberg LLP, Federal Reserve Bank of New York

### **Management and Organization**

- Fearon, D.: Continued his work with Travelers', alumni organizations, and various businesses. This work resulted in many experiences between these organizations/individuals and CCSU students
- Harris, D.: Continued to work with various entrepreneurial organizations and small Businesses to strengthen CCSU's relationship with the business community and to offer learning opportunities to CCSU students
- Stookey, S.: Worked with a variety of New Britain organizations as part of the university's goal related to community engagement. Her work is expected to result in continuing work between CCSU and the local community. In addition, this work involved various CCSU students

### **Management Information Systems**

- During Fall semester 2009, three (3) teams of students from MIS 462 (Systems Implementation and Project Management) competed in designing a web site for the Middlesex Central Connecticut Chapter of the American Red Cross. Representatives from the Chapter including the Executive Director, the Director of Development and Communications, and the Branch Manager, judged the project designs and selected one of the team's designs for implementation.

Team members of the winning design were: Michele Cote, Ivan Mendoza, Mujo Aljkanovic, and Joshua Fischer (Project Leader). Implementation of the web site (<http://www.midtredecross.org/>) was completed by Joshua Fischer and Daniel Lussier

- During Spring semester 2010, six (6) teams of students from MIS 462 (Systems Implementation and Project Management) are competing in designing a new web site for the Hartford Camp Courant. This camp is the largest free day camp in the nation which serves up to 2,000 Hartford Children during the summer
- During the spring semester, 2010, the MIS Student Club conducted a food drive for a community shelter. The Club also sponsored speakers, giving students the opportunity to network with professionals in the field and learn about career opportunities.
- Jarmoszko, T.: Has devoted much time to activities with the Polish community of New Britain. He serves on the Management Board of the John Paul II Saturday Polish Language School and has supported the School's IT-related efforts
- Lee-Partridge, J., Petkova, O., Virgona, T.: During the Spring semester, 2010, delivered short, non-credit course offerings (3 hours each) on topics including Basics of Excel, Enhancing Basic Excel knowledge and skills, Enhancing your ability to represent data using charts, Enhancing ability to make decisions, and Crash Course in HTML. Students, alums, and the community were invited to participate. The seminars were well received by the participants
- Lee-Partridge, J.: During summer 2009, was involved in a project with a non-profit organization called Kids Alive. Kids Alive provides education and care for underprivileged children in the Dominican Republic. For a week last summer, she was a member of a team in the Dominican Republic that provided training sessions on various teaching techniques to the teaching staff at three major sites in the Dominican Republic. In summer 2010, she will return to the Dominican Republic to provide an extension of the training program started last summer
- Lee-Partridge, J.: Member of the Board of Directors for West of Hartford@Home (WOHAH), a private, non-profit organization founded to help senior members live comfortably at home. As a volunteer this year, she helped the organization develop and maintain its initial website (<http://www.wohah.org>).
- Many of the faculty members have guest speakers from businesses in the greater Hartford area participate in their classes. These businesses included Chubb, CIGNA, The Hartford, Phoenix, and Travelers
- Morelli, H.: Member of the Hartford chapter of S.C.O.R.E. (Service Corps of Retired Executives). The organization donates their time consulting with businesses needing a variety of business expertise
- Morelli, H.: Member of the Technology Committee for the town of Suffield, CT. As a volunteer, he donates his time and expertise to this committee which provides oversight and guidance to the Management Information Systems department of the town. Specific activities in which he is engaged include reviewing the town's technology strategic plan and making recommendations for software, hardware, and communication equipment acquisitions
- The department sponsored a CCSU team of students who participated in the Travelers Information Technology Case Competition. The CCSU team, comprised of four Management Information Systems majors, won 2nd place and received a monetary award. The CCSU team competed with teams from Syracuse University, Worcester Polytechnic University, the University of Connecticut, the University of Wisconsin-Eau Claire, and Quinnipiac University. First prize went to the University of Connecticut.

## Marketing

- Greene, H.: has brought guest speakers into his classroom and also to the marketing club to discuss marketing activities
- Lefebvre, J.: Recruiting a client firm for the Marketing Practicum 20010-11

## **School of Education & Professional Studies**

### **Counseling and Family Therapy**

- Cohen, R.: The MFT program implemented the partnership between the CCSU MFT Program and Klingberg Family Centers, placing 6 students at the Klingberg/CCSU Family Therapy Institute. These students ran the outpatient clinic under the direction and supervision of a CCSU MFT faculty member. Dr. Cohen served on an executive planning committee.
- Fried, J.: Consulting with William Dyson, Professor, O'Neill chair, Sarah Stookey & Ken Barone regarding community engagement initiatives and planning of the CCSU2020 conference for Fall 2010
- MFT program entered the third year of the collaboration with Klingberg Family Centers to operate the Klingberg/CCSU Family Therapy Institute
- MFT program students placed at the Naylor/CCSU Community Partnership were consolidated into the new "Family Therapy Department" at Naylor School
- Percy, V.: Assistant Director for the Husky Sport Boy's Program. The assistant director provides support to staff and students involved in the Husky Sport Program. Husky sport is a U.S. Department of Agriculture, City of Hartford, and private donation funded effort to provide nutrition life skills, and sport and physical activity education and promotion of the children of families receiving food stamps and residing in Hartford, CT. The program relies primarily on graduate student staff and student volunteers to deliver the education and promotion to Hartford children at three sites (Clark Elementary, Kelvin D. Anderson Recreation Center, and the Catholic Worker House). The current position (Director and Research Co-Investigator) involves working with those graduate and undergraduate students and organizing their tasks as well as communicating with agencies and individuals in Hartford with whom these students are in direct contact
- Percy, V.: Member of the CCSU Community Engagement Committee
- Tait, C. : Developed a partnership with the School Counseling Program and New Britain High School to begin a cohort of practicum students and interns who will work with 9-12 grade students
- The MFT program implemented a partnership between the CCSU MFT Program and Naylor School (Hartford) to provide supervised practicum and internship students to conduct family therapy in the school. Naylor offered an appropriate space for such activities and gave us a classroom to use for our MFT 583 and MFT 584 seminars
- The School Counseling Program hosted a Professional Advisory Committee meeting and a Site Supervisors meeting for those supervising interns
- The School Counseling Program placed 20 interns; Professional and Rehabilitation Counseling placed 13 interns; Student Development and Higher Education placed 12 interns; and Marriage and Family Therapy placed 27 interns throughout Connecticut for the 2009-10 academic year

### **Educational Leadership**

- Abed, F.: Directed a series of workshops for 5th grade New Britain students on Comic life
- Lisi, P.: Principal CCSU Liaison and Project Evaluator for the Lyme Academy College of Fine Arts/ Teacher Quality Partnership Program in the Arts
- Retelle, E.: Worked with Simsbury Public Schools to examine how Simsbury educators lead, promote, and advance social justice work through practices, programs, policies, and other actions in the schools

- Rigazio-Digilio, T.: Chaired the committee that wrote Guidelines for SEPS Departments to consider Engaged Scholarship as part of DEC review
- Rigazio-Digilio, T.: Recipient of Outstanding Community Service Award by the West Indian Foundation of Greater Hartford
- Sogunro, O.: Served on the board of Opportunities Industrialization Center of New Britain, Inc. (OIC NB)
- Watson, S.: Recipient of the Outstanding Community Service Award by the Consolidating School District of New Britain
- Yearlong partnership with East Windsor Public Schools on teacher evaluation
- Yearlong partnership with New Britain Public Schools on school improvement
- Yearlong partnership with Plainville Public Schools on District Vision and Capacity Building

## **Nursing**

- Second Family Health Fair at Naylor School in Hartford with several courses of students participating
- Service Learning activities in NRSE 246 initiated
- Working on course policies for community engagement

## **Physical Education & Human Performance**

- Albano's Nutcracker, Welte, Dec 5-6, The Greater Hartford/ New Britain Community, 8 CCSU Dance Students performed
- CCSU/ New Britain School Department Partnership Committee with Yoga classes in the New Britain Middle Schools Fall 2010
- Children's Performance –Nutcracker, Welte Auditorium, Dec 4, 2009 Attended by 1200 New Britain Public School Students, 8 CCSU dance students performed.
- Coordinator/New Britain Public School System Children's Performance for the Nutcracker-brought in 1600 public school children, Dec. 5, 2009
- Coordinator/Presenter Dance the Language of Movement, Welte Auditorium, May 26, 2009
- Dance the Language of Movement, Albano Ballet, Welte Auditorium, April 9, 2010, attended by 800 New Britain Public School students
- Hosted the 25th Annual CCSU Sports Medicine Symposium
- Hosting the Public School Outreach Dance Education Series for the New Britain School System
- May 29, 2010 CCSU's Athletic Training Club volunteer to assist in medical coverage for the CFM NFL Football Camp attended by over 500 inner city student athletes in Hartford (Bulkely HS)
- Partnership with The Artist Collective, Hartford CT hosting The Cleo Parker Dance Ensemble from Denver CO
- PE 299 – Students complete 10 hours in the public schools at the three different grade levels examining behavior management and motivation
- PE 406 – students complete 15 practicum hours by volunteering in settings such as Special Olympics or Unified Sports
- PE 408 – students interview professional educators regarding the development of school district curriculums
- Sharing the Stage, a collaborative concert between CCSU dance program, with national, regional and local companies- Albano Ballet Company, Equilibrium Dance Theatre and the Kinsella Magnet School. Open to the Public. 13 dance students,8 student technicians
- Volunteered to work with amputee athletes on the USA Standing Amputee Hockey team at the

2010 World Championships this past May in Canada (bronze medal).

## **Reading and Language Arts**

- Demos, E., J. Turner: Executive Board Members, Alliance of Youth in New Britain—a community-minded organization focusing on creating educational and mentoring opportunities for New Britain youth. The Alliance is made up of community leaders in partnership with the New Britain Consolidated School System
- Demos, E., Valerie, L.: Directors: Literacy Center offers free remedial reading and language arts services to students, grades 1-12 on a one to one basis, in communities surrounding CCSU—New Britain, Plainville, Waterbury, Winsted and Hartford.
- Fall Open Institute: Poetry Across the Curriculum participated in by 50 teachers in Connecticut (2009, October).
- Kara-Soterious, Kurkjian, C.: Conference Chairs: 4th Literacy Essentials Conference (March 21, 2009), an annual conference hosted by the Department of Reading and Language Arts to inform a wide range of practitioners and scholars in Connecticut and other surrounding states, about the most up-to-date research and best practices in education, particularly in reading and language arts through hands-on workshops, paper presentations, panel discussions, research poster sessions, and activity demonstrations.
- Kurkjian, C. : Executive Board Member (as past President) (C. Kurkjian), New England Reading Association (NERA)—a non-profit organization with membership from the six New England states, whose purpose is to engage in promoting and supporting the improvement of reading on local, state, and regional levels; supporting quality and effective reading/language arts instruction; disseminating information of ideas, pertinent research, practices, and strategies; and fostering the opportunity for networking.
- National Writing Day Celebration with 80 participating teachers involved in professional development (2009, October).
- Newton, R., Turner, J. : Phi Delta Kappa (PDK), CCSU Chapter. The association is a dedicated advocate for the public schools. PDK also co-sponsors the Annual Literacy Essentials Conference.
- Turner, J.: Clinical Faculty: Literacy Center offers free remedial reading and language arts services to students, grades 1-12 on a one to one basis, in communities surrounding CCSU—New Britain, Plainville, Waterbury, Winsted and Hartford
- Valerie, L., Abed, A., Murratti, B.: Collaboration between New Britain school and CCSU focusing on the impact of the use of technology on student motivation to write
- Valerie, L.: Central Connecticut STUDENT Writing Project. A 2-week writing program for young writers, grades 6-10, and taught by CCWP Fellows. The project was in collaboration with 26 teachers in New Britain and East Hartford Public Schools. The project received \$2,300 from the two districts
- Valerie, L.: Central Connecticut Writing Project (CCWP), a site of the National Writing Project, offers professional development programs to teachers in all subject areas and all grade levels in order for them to learn new strategies to help their students become accomplished 17 writers and learners. Summer 2010; 15 participants
- Valerie, L.: Family Literacy Night at Chamberlain Elementary School in New Britain, CT (2010, March; 90 parents and children), and O'Brien Elementary School in East Hartford, CT (2010, January; 100 parents and children), under the coordination and supervision of Dr. Lynda Valerie. (The East Hartford Family Literacy Night was featured in the Journal Inquirer.)
- Valerie, L.: Off-site clinic at Chamberlain Elementary School, New Britain, CT. Served 18 students with one-on-one tutoring for two hours each semester, fall 2009 and spring 2010

## **Social Work**

- Baratta, C.: 2002-present Member, Program Committee
- Baratta, C.: 2003—present Member, Supportive Housing Selection Committee (Formally PEAK Supportive Housing Program for Persons with Disabilities)—provides HUD vouchers to persons exiting emergency shelters, City of New Britain
- Baratta, C.: 2007-present Member, Advisory Board, Family Resources Center, City of New Britain School System
- Baratta, C.: 2008-present Trustee, Collaborative Center for Justice, Hartford, CT
- Baratta, C.: 2009-present Member, CCSU-New Britain Schools Partnership
- Baratta, C.: 2009-present President, Board of Directors, Human Resources Agency of New Britain; 2002-present, member; 2003-April 2009, Vice President of Board of Directors; 2003-present, member of Personnel Committee
- Gonzalez Sanders, D.: 12/09 – current Member Medical and Scientific Advisory Council Alzheimer’s Association, Connecticut Chapter 279 New Britain Ave. Kensington, CT
- Gonzalez Sanders, D.: 3/07 - current Affiliate Member, Connecticut Center for Eliminating Health Disparities Among Latinos, (CEHDL), consortium led by the University of Connecticut and including the United States Department of Health and Human Services, National Center on Minority Health Disparities, National Institute of Health, Hartford Hospital, the Hispanic Health Council of Connecticut
- Gonzalez Sanders, D.: 3/10 – current Advisory Board Member – Connecticut Community Care Incorporated, Bristol CT, Offices in North Central Regional, Northwest Regional & Eastern Regional CT Reach Project
- Gonzalez Sanders, D.: 7/07 – current Advisory Board Member State of Connecticut, Department of Children and Families Training Academy
- Gonzalez Sanders, D.: 9/08 – current Member of Board of Directors - Early Learning Program, Inc. Pre-School & Child Care Center located at Central Connecticut State University New Britain, CT 06050
- Gonzalez Sanders, D.: Fall/09- current Member Latina/Latino National Association of Social Workers, Connecticut Chapter, Rocky Hill, CT
- Hensley, P.: 2010 submitted proposal Co investigator community engagement grant- "Undergraduate Nursing and Social Work Student Engagement with Underserved High School Students at Opportunity High School, Hartford CT.

## **Special Education**

- Outside evaluator for four individuals going up for Tenure and Promotion at the University of Karachi, Pakistan
- The department of Special Education has presented proposals to the State of Connecticut Technical High School system and to the Connecticut Junior Republic on developing a masters in Special Education cohort group. We will be providing the courses that lead to the masters. Plus, with CJR, we will be providing staff development activities and they will be providing a site where we can place observation students, practicum students and student teachers

## **Teacher Education**

- 2nd Annual Naylor-CCSU Community School Family Health & Fitness Fair: (April 27, 2010) Project was initially funded by a UPBC Strategic Planning Grant involving students and faculty from across Teacher Education, Nursing, Physical Education and Human Performance, and

including significant contributions by Marriage and Family Therapy interns. The 2010 event was not grant-funded, but continued as a collaborative project, adding a new connection to CCSU faculty and students in Communication. CCSU presentations and topics were identified via Family Health Surveys that were collected from members of the Naylor community during spring 2009 with input and assistance from Naylor teachers through PDS Steering Committee. Spring 2010 curricula and requirements for multiple CCSU courses were aligned to allow authentic community needs around health and fitness to be addressed and to effectively publicize the event and collect feedback data. Over 100 CCSU students and 6 faculty members (along with Naylor colleagues) participated in the creation and implementation of the Fair, which was well-attended by Naylor community members, families, children and teachers. Naylor middle school students participated (with CCSU Mentors) as guides and Ambassadors. Community health-related partners were recruited and joined the Fair. Invitations were translated into English, Spanish and Bosnian, in response to local community demographics. See Interdisciplinary section below. See also Interdisciplinary Studies section.

- Anthropology Culture Sharing Project: (Fall 2009) CCSU Anthropology students and professor completed course requirements in Naylor CCSU Community School Partnership's authentic setting, meeting with students and adults who are recent immigrants from Bosnia. This project supports ongoing community-building efforts with the SouthEnd Bosnian and Muslim community, connecting Naylor-CCSU with a newly opened local mosque.
- Ayalon, A.: Community engagement grant: Won a \$2600 community engagement grant together with Dr. Ali Antar, chair of Physics Department, to provide support by CCSU students to Advanced Placement physics high school students at New Britain High School
- Ayalon, A.: New Britain/CCSU liaison committee: Active member both as faculty member and as New Britain School board member in the New Britain/CCSU liaison committee headed by Dr. Paulette Lemma and the New Britain school district assistant superintendent. The committee functions as a clearinghouse for various collaborations and promotes sustainable community projects
- Ayalon, A.: School Board member, Consolidated School District of New Britain. Participate in meetings, committees, and chair of the liaison with CCSU Board committee
- Ayalon, A.: School counseling internship at New Britain High School. Mediated a dialogue between the Counseling department at CCSU and New Britain Schools that led to the establishment of a partnership where interns in their last year of the program will serve their 900 hours (25 hours/week) in NBHS
- Catch the College Spirit Project: (Fall 2009) FYE student Mentors from CCSU Psychology course paired with Naylor middle school students to focus on transitions and pathways to college in this leadership development/service learning opportunity. After a successful pilot, a second (fall 2010) project has been planned (to be supported by a CCSU Community Engagement grant.
- CCSU Graduate Research Presentations: (May 6, 2010) 2 Naylor teachers acted as Discussants for CCSU graduate level action research presentations in Education.
- Citizens-in-Action MicroSociety Program (C.I.A.): CCSU Teacher Candidates integrate fieldwork requirements with activities involving the Naylor middle school MicroSociety structure, participating in governance, economics, service and civic agency. Naylor C.I.A. Coordinator (teacher) facilitates sessions and engages in reflection with CCSU students and classes.
- Clark, B. & Werblow, J.: Unmasking Identity: A bilingual, multicultural writing and art program with masks and movement. (New Spring 2010); Teacher Education: Barbara Clark and Jacob Werblow with EDTE 314 students/Diloreto eighth graders
- Clark, S. and Werblow, J.: Creating a Compassionate Community to End Homelessness: featured state, local, and national leaders who are committed to ending homelessness, and was

attended by over 200 students

- Clark, S.: CCSU Elementary Education & Gaffney Elementary School: Rally to Recycle Carnival, Vance Courtyard, April 2010
- Clark, S.: CCSU Elementary Education & Sprague Elementary School K Children, Waterbury: Storybook Characters Come Alive, Barnard Hall, April 2010
- Clark, S.: CCSU Elementary Education Students & Gaffney Elementary School: Creating a Compassionate Community to Stop the Dolphin Extinction in Taiji, Japan, New Britain District- Grades four & five, parents and community members CCSU Welte Auditorium, May 2010
- Clark, S.: CCSU Elementary Education Students & Gaffney Elementary School: Creating a Creative Compassionate Community to End Homelessness, Grades three, four and five, parents and community members. May 2010
- Columbus Day/South End Community Parade: (Fall 2009) CCSU students and faculty participate with Naylor teachers, staff, families and children and South End community members to create floats and celebrate the school, the partnership and the community.
- Community-Sustainability-Responsibility-Water Project Design: Working with CCSU faculty and students, Naylor faculty, community members and Naylor teachers (including CCSU program graduates) to develop a PK-8 curriculum, apply for related grant-funding, design connections to CCSU courses and professors, and draw links to CCSU Art Gallery and related community partners for 2010-2011 academic year. This project also involves developing leadership roles among Naylor-CCSU faculty and students.
- Creating a Compassionate Community to Save our Planet: Elementary education teacher candidates address critical issues in our environment both locally, nationally and internationally for fourth and fifth graders. (May 2010)
- CSUS Day: (April 2010) Created a collaborative representation of CCSU's community engagement efforts at Naylor and a showcase of the school-university-community partnership at CT Legislature.
- CT Community Engagement Conference Presentations: (March 2010) Facilitated and co-presented 3 conference sessions related to aspects of the Naylor-CCSU Community School Partnership (involving CCSU's Nursing, Teacher Education, International Education, Marriage & Family Therapy students and faculty and Naylor administrator and faculty members). For some, this was an introduction to professional conference presentations.
- Cueto: EDTE - Interns placed in the building for 2009-2010 from CCSU for field experience.
- Cueto: EDTE: 210 Student placements for their field experience. Dr. Cueto meets with the class in Vance from 12:00-1:00 (seminar).
- Drew, S.: Classroom demonstration lessons: Demonstrated research bases best practices in literacy; discussed and processed demo lesson with classroom teacher and teacher candidates
- Drew, S.: Learning Walk, Assessment for Learning: Cohort comprised of teacher candidates, classroom teachers, building administration and myself visit classroom in Instructional Rounds format to share accountable observations and reflections on teaching and learning practice according to established rubric
- Drew, S.: PDS Steering Committee: Organize a PDS leadership team of approx. 10 diverse university, district and school administrators and faculty for PDS governance. Meet monthly to establish PDS mission, long term goals and annual objectives. Collaboratively plan, facilitate as assess five half day professional development session based on teacher input and feedback
- English for Non-Native Speakers: (November 19, 2009) TESOL students from LING 496 complete course requirements in an authentic setting, offering mini-lessons for students, parents, and other Naylor-CCSU Community School Partnership members, no matter their level of English proficiency (ex. Using Coupons, Completing Job Application Forms,

American Idioms, Fire Safety and Prevention, Talking about Places in your South-End Community, Letter Writing, Folk Tales).

- French, J.: CCSU – New Britain School District Liaison (NBSD) Team
- French, J.: University – Museum – Community (UMC), New Britain Collaborative Committee Member
- Global Environmental Sustainability Symposium: (April 5, 2010) Naylor Middle School students and teachers and CCSU student Mentors and faculty attend the conference at CCSU as part of their study of sustainability and civic agency.
- Hoffman, N.: Revision of the Connecticut Common Core of teaching- I was part of the team that revised this document
- Integrated Academics and Service Learning: Coordinating CCSU academic and fieldwork requirements and topics from courses throughout the university with Naylor academics, MicroSociety and service learning requirements. Naylor teachers and administrators teach sessions in CCSU classes, which often meet in the Naylor setting.
- Life Space Crisis Intervention Training for all Naylor staff and teachers and for CCSU teacher candidates and other field students from SEPS who are working at Naylor: Facilitated by CCSU SPED faculty. Began in Spring 2009 (funded by State Legislative funds through Institute for the study of Crime and Justice) and extended into 2009-2010 with training for additional staff and Naylor parents. See Interdisciplinary section.
- Love, Kurt: Gaffney Elementary School, New Britain, CT. Using Theatre of the Oppresses in the Classroom (October, 2009) and Creating a Community-Based Practice with the Arts (November, 2009)
- Love, Kurt: Habitat for Humanity: January 2010- Led a Global Village team of 20 members (including six students from CCSU School of Education and Professional Studies) to Kauai, Hawaii to help build houses for families
- Love, Kurt: Magnet School Assistance Program: (Applied March 2010- Pending) In Partnership with Mary M. Hooker Environmental Studies Magnet School in Hartford, applied for a \$1.5 million grant provided by the federal government. Serve as program co-director along with J. Joss French, Ph.D. from Central Connecticut State University
- Middle School Student-Led Portfolios: (Fall 2009/Spring 2010) CCSU student Mentors participated as coaches, observers, tutors, along with Naylor teachers, Middle School Mentees and families.
- Naylor-CCSU Community Partnership Community Night: (April 21, 2010). Formal showcase of academic and service projects and activities involving teachers, families, local community members, Hartford School Board members, CCSU faculty and students and alumni, with emphasis on Naylor-CCSU-Community connections and leadership development.
- Naylor-CCSU Community School Governance Council: New governance/strategic planning structure established by Hartford School District in 2009, including administrator, teachers, parents, union and School Board representatives. I participated in training sessions through 2009-2010 and serve as regular member and SGC Secretary for monthly meetings.
- Naylor-CCSU Community School Partnership Database: Developing a comprehensive shared partnership database and arranged for acquisition of donated hardware from CCSU and purchased software through grant and Naylor School funding. Connecting to CCSU School of Education database.
- Naylor-CCSU Community School Partnership Vista Site: Developing a comprehensive shared partnership Vista 'course' site through CCSU which includes all Naylor faculty and staff and all CCSU faculty and students who are engaged with Naylor-CCSU community. This virtual 'community commons' allows for boundary-crossing communication, shared data collection and analysis, collaborative activities and reflection, etc.
- Naylor-CCSU Mentoring Celebration: (December 2009) @ 50 Mentoring Project presentations

each semester, including faculty, parents, students. Projects often combine service, leadership and academic elements.

- Naylor-CCSU Mentoring Program: At least 50 CCSU Mentors from EDTE 316 and EDTE 314 work with Naylor middle school Mentees each semester during the school year. Mentoring teams meet weekly and engage in service or work projects, tutoring, culture-sharing, high school choice decisions, leadership activities, academics and fun. Mentors often participate with Mentees in special projects and/or after school programs and often make connections with their Mentees' families over time.
- Naylor-CCSU Professional Development School Steering Committee: I co-facilitate weekly PDS Steering Committee meetings at Naylor, managing strategic planning, project and program design and implementation, reflection, data collection and communication among school/university/parents/community partners.
- Naylor-CCSU Research Group: Multi-disciplinary faculty group, established in Fall 2008 to Brainstorm possible process/product data points, evidence of impact, descriptive and demographic info to collect, identify data collection practices, sources and instruments already available, prioritize action steps re: evaluation and research, with emphasis on setting structures that allow us to capture data immediately, note current/possible other partners, note current/possible resources, grants, opportunities, identify time line/calendar, communication plan, data points, key contact people, set up data management, and identify next steps for collaborative community engaged scholarship.
- Naylor-CCSU-Goodspeed Project: (December 2009 & May 2010) Through an anonymous foundation partnership grant, Naylor 3rd graders, teachers, parents, support personnel and CCSU professors and teacher candidates attended a special presentation of Emmett Otter and 8th graders (plus teachers, etc.) attended a presentation of Annie, Get Your Gun. Each visit included the tickets to the play, plus participation in an actors' workshop, theatre tour and lunch.
- Principal and faculty members from Dr. James H. Naylor (CCSU Community School Partnership, a PK-8 public school in Hartford, CT) participated in community engagement programs and activities at CCSU: Middle and H.S. Consortium and Student Teacher Advisory Board memberships, Civic Agency Webinar (Spring 2010) and Sustainability Workshop (Spring 2010).
- Riem, K.: Dr. James H. Naylor School is a diverse learning community steeped in rich history, tradition, and academic excellence; the school represents a partnership with parents, Central Connecticut State University and the community.
- Seider, S.: Board Member: Charter Oak College Assessment Committee. 2008- present
- Seider, S.: Board Member: CT Partnership for Sustainability Education. March 2009 –present
- The Naylor-CCSU Collaborative Mural Project: (Spring 2010) Supported by the Institute for Municipal and Regional Policy (IMRP), CCSU (Graduate Fine Arts) and Naylor students and faculty members reflected, designed and painted collaborated on the creation/installation of 2-story community mural at Naylor School atrium.
- The Naylor-CCSU Collaborative Writing Project: (Spring 2010) Supported by the Institute for Municipal and Regional Policy (IMRP), CCSU (ENG 483) and Naylor students and faculty members reflected and wrote together on campus and at Naylor, producing final writing projects for publication in Spring 2010 edition of The Helix (CCSU literary magazine).
- Werblow, J.: Editor of the Community Engagement Grant (Chaired by Dr. Karen Ritzenhoff) recently submitted by the University-Museum Collaborative (UMC).
- Werblow, J.: New Britain Bus Tour: I helped coordinate this event, involved local school leaders (including New Britain Homeless Liaison Jow Vaverchak and New Britain Assistant Superintendent Ron Jakubowski), guiding tours of Teacher Education students on a tour of the various neighborhoods and boroughs of the city. Five CCSU Teacher Education professors

were involved and over five sections of students attended the tour

- Werblow, J.: Professional Development workshops- Dr. Kurt Love, Dr. Barbara Clark, Dr. French and Jacob Werblow lead a series of professional development workshops at Gaffney Elementary School. The work was written up in the New Britain District News
- Werblow, J.: Research Project- Lyndsay Ruffalo, from the Institute for the Study of Crime & Justice (ISCJ), and Jacob Werblow are conducting a state-funded research project to assess the effects that a specific programs at Naylor have on student retention, truancy, and violence prevention
- Werblow, J.: West Bank Refugee Community Development Project, European Union, Annual budget from 2009-2012: \$50,00.00, Responsibilities: Assisted the lead author in writing the proposal and provided direction in clarifying the project outcomes and aligning these outcomes to the call for proposals

## **School of Engineering & Technology**

### **Biomolecular Sciences**

- CCSU Night at Homes School (Martin and Mulrooney)- science based workshops for elementary school students at Homes Elementary School
- Girls in STEM EXPO, Martin and Mulrooney including 2 CCSU students. Science and technology workshops for participants in the Girls in Stem Expo
- High school partnership with Sports Sciences high school in Hartford – 80 students came to CCSU for five Bio labs and Five Chemistry labs (included 15 CCSU students)
- Hoopengardner, B.: Connecticut Convention Center, Hartford, CT. Topic: Biomimicry. The Center for 21st Century Skills @ EDUCATION CONNECTION
- Hoopengardner, B.: Connecticut Student Innovation Expo Science Fair Judge, May 8, 2010 (8AM-2PM)
- King, T., Martin-Troy, K., Davis, M.: High School Student Research Apprentice Program (4 summer interns, 6 weeks of full-time work) (including 3 CCSU students)
- King, T., Mulrooney, J., Davis, M. : Research Mentorships in Biomolecular Sciences at CCSU for Pathways/Senderos Participants (10 high school interns, 15 weeks x 3 hours, Fall 2009) (King, Mulrooney and Davis with undergraduates Pacheco and Taylor, Davis with undergraduates Moran and Soucy, Mulrooney with 8 CCSU students)
- Martin-Troy, K. : Partners in Science program – Ten Saturday morning laboratories with three offerings each Saturday to 125 students from Southington, Meriden, and Bristol middle schools. coordinated by Dr. Martin (included 15 CCSU Students)
- Martin-Troy, K., Davis, M.: Great Explorations program: Physiology labs brought to five Hartford middle schools (Naylor, Bellizzi, Kennely, GHAMAS, SMSA) – 35 workshops presented by Drs. Davis and Martin to 80 Hartford 8th graders, Chemistry labs brought to five Hartford middle schools – 15 workshops presented by Dr. Martin (included 3 CCSU students)
- Science Fair Judging for Southington Middle Schools (included 8 CCSU Students)

### **Computer Electronics & Graphics Technology**

- Night at the Museum (preparing for fall 2010)

### **Engineering**

- ASME Student Paper Night: [ CCSU- Won the first place in this competition], 2 CCSU students: Students from local colleges and universities will present an oral presentation on a topic of their choice. The topic is to be related to a technical, economic, or environmental aspect of engineering or any other basic engineering theme. This competition is designed to emphasize the value of an ability to deliver oral presentations, networking and engagement with local professional societies.
- Baumann, P.: Director, Board of Southern Connecticut Chapter of ASM, International, 2003-present
- Dischino, M., Al-Masoud, N., Baumann, P., Naourmov, V.: Go For Aerospace! is a NASA-funded innovative extracurricular program designed to excite high school juniors about careers in aerospace engineering. The main objective is to reach out to students with high potential in math and science who are undecided about their college plans and/or choice of major
- Gates, P.: Director of a NASA Sponsored helicopter work shop August 1-6, 2010. 30 Graduate and under graduate students from the US and Puerto Rico will be attending CCSU and University of Hartford for a week long intensive program on principles of helicopter flight, low

speed rotor blade aerodynamics, helicopter wind tunnel testing methods, introduction to unmanned aerial vehicles and vertical take off and landing aircraft. Funded by NASA Connecticut Space Grant, [www.cthelixp.com](http://www.cthelixp.com)

- Gates, P.: Human powered helicopter quad rotor blade test fixture collaboration with East Haddam High School. Students and faculty at East Haddam High school are working with senior students and faculty to build a quad rotor test fixture that is approximately 50 feet by 50 feet. This test fixture will be used by the students in the NASA Sponsored helicopter work shop. 10 CCSU students
- Vasko, T. : MathCounts Participation - MathCounts is a national competition sponsored by the National Society of Professional Engineers to encourage the study of math in 7th and 8th grade students and to introduce students to engineering careers: Hartford Chapter Competition – February 13, 2010, Connecticut State Competition – March 13, 2010
- Vasko, T., Baumann, P., Gates, A.: Provided through the Connecticut Society of Professional Engineers an NSPE Fundamentals of Engineering Exam Review Course for engineering staff at Alstom Power. Professors Vasko, Baumann, Gates, Lahey, and Al-Masoud provided through the Connecticut Society of Professional Engineers a follow-up NSPE Principals and Practices of Engineering (PE) Exam Review Course for their personnel

### **Manufacturing & Construction Management**

- Both the CM and TM students clubs had multiple guest speakers at their club meetings and the co-hosted several professional society meetings on campus.
- Both the TM and CM programs have Industry Advisory Boards that bring in local industry representatives to assist in program evaluation and enhancement
- Stec, D.: Approximately 25 students from Prof. Stec's courses participated in projects with industry partners
- The Department runs the BEST robotics competition for high school and middle school students during the fall semester. BEST Robotics was organized for the 4th time on November 1, 2009 and attracted some 400 students mostly from urban schools in New Britain, Bristol, and Hartford. As an inexpensive project for participants, this competition is a perfect recruitment venue for predominantly minority students from urban schools.

### **Technology & Engineering Education**

- CCSU Community Engagement Grant: "The 2011 University Museum Community (UMC) New Britain Collaborative: Representing "Water Across Academic Disciplines, Museum and the Community" - Total support requested is \$10,000. Outcome pending.

## **Administrative Units**

### **Division of Academic Affairs**

#### **Center for Advising & Career Exploration**

- Completed tax returns on a volunteer basis as part of the VITA (Volunteer Income Tax Assistance) program. Program serves low-income, inner city individuals.
- I presented a workshop on looking at college as a path to your career at New Britain High School. The workshop was done in collaboration with ITBD.
- I serve on the Board of Director for the Achieve Financial Credit Union. I have been a member of the board since 1994 and Chairman for the past six years.
- Monitor water quality and check for invasive plant species
- Serve on Leadership Boards to advocate for protection and preservation of natural resources. Basin and David and Tilton Pond Association, Kennebeck Land Trust
- Tutor, Read to Succeed, Hartford YMCA (program works with dyslexic adults). Board member (self-governing board), Wesleyan Potters, non-profit craft guild and school.
- We have held career fairs for current students, alumni, and the public. As an office we have gone into the classroom for workshops including: resume, interview, career research, personality/vocational assessments, and other specialized information. We have also presented for Man Enough, The BSU, and other student groups on campus.

#### **Center for International Education**

- Although credit-bearing Courses Abroad are the purview of the faculty, the CIE continues to work with faculty on the delivery of Course Abroad programs with strong community engagement components - e. g. in Nicaragua and Peru. Such courses directly engage CCSU students with the history, culture, economy, art, and politics of the local international community.
- Collaborate with CCSU's 20 overseas partner institutions to foster faculty and student exchange programs that further internationalize CCSU's curriculum and student body and can include internships and/or service learning opportunities abroad.
- Collaborate with the New Britain Sister City Committee to foster a better ongoing working relationship and mutual understanding between the City of New Britain, which includes the CCSU community, and the citizens of New Britain's 5 international Sister City programs that are located Germany, Japan, Italy, Poland, and Greece.
- The annual International Festival, planned and overseen by the CIE, is a dynamic event that brings ethnic communities from New Britain and across Connecticut to campus for a day of dance, music, song, and sharing. Approximately 50 organizations are represented, including groups such as the Polish Girl Scouts, the New Britain German Bund, as well as African, Indian, Turkish, Greek and many other adult and young people's community clubs. The Festival also highlights national causes, such as the Haitian relief effort and Katrina victims.
- The Barnard International Education Project (BICEP), which began last year, continues to flourish this year. It is a partnership of the School of Education, the Naylor School of Hartford, and the CIE. The goal of BICEP is to share the knowledge and expertise of CCSU's international students with children in the region's public schools. A service learning component was incorporated into IELP classes this fall, working in tandem with the teachers and administrators of Naylor.
- The CIE is spearheading the State-wide website initiative ([www.ierconn.net](http://www.ierconn.net)) that is bringing

together SCSU, WCSU, ECSU, and 7 members of the Hartford Consortium - St Joseph College, RPI, University of Hartford, UCONN Storrs, Trinity College, Hartford Seminary, and Capital Community). We collaborate to share information online regarding study abroad opportunities, faculty expertise, international students networking, international events in CT, and an array of comparative statistics. We go live this month.

- The CIE worked this year with the Smith Middle School on a collaborative effort that brought middle school children together with CCSU International Students for a day of cultural sharing, hosted at their school.
- The Conversation Partners program matches English language learners in the Intensive English Language Program (IELP) with volunteers from the New Britain Community. Volunteers meet with students a minimum of one hour per week to help International Students with English language skills and to answer questions about American culture.
- The Senior Center Outreach program brings together seniors at the New Britain Senior Center with IELP students. Students in the high-intermediate and advanced-level Listening/Speaking classes are matched with New Britain Senior Citizens and conduct interviews. Students give presentations on their native countries, participate in dance and art classes with the Senior Citizens, and share a meal.

### **Office of Institutional Research and Assessment**

- Helped coordinate two IPEDS training modules for state and northeast: (1) IPEDS Data as the Public Face of an Institution, and (2) IPEDS Data and Benchmarking: Supporting Decision Making and Institutional Effectiveness. These initiatives will help promote integrity of educational data and improve the use of data by campuses and organizations.
- Served on IPEDS Technical Review Panel #30 'IPEDS Reporting Burden' in Washington, DC. The panel made recommendations to change burden estimates and develop ways to reduce reporting burden; the project will benefit all Title IV institutions, including CCSU.
- Served on U.S. delegation for the Assessment of Higher Education Learning Outcomes (AHELO) project through OECD. This project involves conducting a feasibility study to measure student learning across institutions internationally; it will benefit policy-makers and association of CCSU with the project raises the institutional profile for assessment and international education.
- Worked with the CT Interoperability Systems Council to develop 2 projects: (1) Remediation data by high school; and (2) Tracking post-secondary outcomes of high school graduates from 2003. These initiatives are designed to promote student success at all levels and will benefit CCSU as well as citizens across the state.

### **Provost's Office**

- Board of Directors of the New Britain Mayor's Work plan to End Homelessness
- Chair, the New Britain American Red Cross Advisory Committee, which sponsors the annual 'Taste of Central Connecticut.'
- Executive Committee of the Board of Directors of the Middlesex Chapter of the American Red Cross

### **School of Arts & Sciences, Dean's Office**

- Collaborate with The Travelers Companies, Inc. to foster relationships with faculty in the school of arts and sciences and facilitate mentoring and internship opportunities for our students.
- Richard Roth, Associate Dean of Arts & Sciences, volunteers as President of the Board of Directors of The Newington Children's Theatre Company (NCTC), a non-profit, educational program. NCTC provides hands-on, educational and performance opportunities in the

performing arts for students from towns throughout the Greater Hartford and Greater New Britain regions, as well as bringing performances to communities throughout Connecticut. A day of workshops and performance is brought to CCSU annually in which NCTC students work with CCSU Theatre Department students and faculty for a morning of workshops and present an free afternoon performance of the NCTC Touring Company musical for the campus and surrounding community in Torp Theatre.

### **School of Education & Professional Studies, Dean's Office**

- Kappa Delta Pit, the student honor society in education, partnered with Vance Village Elementary School in New Britain in fall and spring, 09-10, to raise funds to send 5th graders to Nature's Classroom. Two pasta dinners were organized and held with community donations during Parent/Teacher Conference weeks.
- Once a semester for the past ten years, the associate counselor for this office has spent a full day at Tunxis Community College, presenting a workshop and meeting with students regarding teacher preparation in CT and, more specifically, the teacher education program at CCSU. In 2009-2010, a similar program, open to the public, was also offered at Asnuntuck CC.
- The Associate Counselor is an active member of the CREC Minority Teacher Recruiting Program. She attends monthly meetings and participates in recruitment efforts, e.g., Minority Teacher Recruiting Fairs, sponsoring grades 7-12 campus visits.
- The Dean's Office contributes financial support for the annual Amistad Lecture and Banquet, which marks the mutiny on the slave ship Amistad and the subsequent legal court battle.
- The Dean's Office has provided modest funding for the Lindgren Family Professional Development Network, a group which brings together current and retired educators, principals, and superintendents for networking and related professional development activities.
- The Dean's Office provides funding to support the Annual Alumni Networking Event organized by the Department of Educational Leadership. This event is attended by current graduate students in Educational Leadership and honors outstanding alumni who have received awards in their respective fields, e.g., Principal of the Year, Teacher of the Year.
- The Dean's Office provides modest funding for the Exercise Science College Bowl. Three students are on the CCSU team that competes in this annual regional event. An additional 50 students attend to support the CCSU team.
- The Dean's Office sponsored the Sustainability Education Conference in April 2010. Organized by Dr. Susan Seider, Chair of Teacher Education, the event drew over 20 participants from CT and neighboring states.
- The SEPS Dean's Office provides modest funding for departmental community advisory boards. These boards meet at least annually to provide input to departments on curriculum and programming and help to ensure that our offerings are relevant to community needs.

### **School of Engineering and Technology**

- CCSU Girls & STEM Expo': On April 1, 2010 the School of Engineering and Technology organized the second 'Girls & STEM Expo' and hosted some 120 middle school female students. The sessions by SE&T faculty and students were to encourage participating girls to continue their education in STEM disciplines. I am planning to sponsor the Expo again in 2011.
- LEGO Robotics for middle schools was organized for the 11th time on December 13, 2009. The event was very successful, attracting over 1,300 middle school students. The School and I personally were officially recognized by the FIRST officials for 10 years of support for FLL Robotics.
- VEX Robotics was organized for the 2nd time on February 25, 2010. Because we couldn't reserve an appropriate room on campus we had decided this year to organize it in Manchester High School. The Kaiser Gym has been already reserved for 2011 VEX Robotics.

- 'Go for Aerospace': In fall 2009 we started the second round of the 'Go for Aerospace' recruitment project, due to an additional \$350,000 from the NASA grant. This year we brought some 45 minority students to the program at CCSU, followed by summer camp at CCSU and a trip to the NASA Center near Washington, D.C. Although I am a Principal Investigator I gave the total budget to compensate involved faculty and personally provided leadership and supervised the entire program.

### **University Learning Center**

- Bridges program (Mathematics)- Accuplacer technical support

## **Division of Administrative Affairs**

### **Department of Athletics**

- CCSU Open House volunteers. Members of our teams volunteered at the Fall and Spring Open House functions to meet, greet and give tours to prospective students and their families.
- Many coaches and their student athletes conducted free clinics in their sport to youth in the community. Teams included: men's soccer, women's soccer, lacrosse, baseball, men's basketball and softball.
- Nike Sneaker Recycling Campaign. Our student athletes, over the course of approximately 4 months collected 207 pairs of sneakers to donate to the Nike recycling program that will be re-used to build playgrounds and tracks.
- Operation Christmas Child. Our coaches, staff and student athletes collected 100 shoeboxes filled with gifts to be delivered to needy children around the world. They also collected money to help ship the boxes.
- Our women's track and cross country teams volunteered on numerous occasions at the New Britain Museum of Art to help in various ways...clean up the facility and grounds and to work a fundraiser event.
- Outreach and support for the military. The women's track and cross country teams sent care packages to military. They also contributed many cell phones to the campaign to provide military overseas with cell phones. The team also orchestrated A Million Thanks where people who attended a basketball game at CCSU could write a thank you note to the military and they would mail them out.
- Several teams participated in outreach to local schools in Hartford, New Britain and Plainville by reading to children and mentoring on positive actions they may take to achieve in school and to prepare the way for college. The baseball team met weekly with a local school for several hours throughout the year.
- Special Olympics. Several teams participated in local Special Olympic events by helping run the events and assist participants. Others participated in the Penguin Plunge which included raising money.
- Toiletry Drive. Our student athletes collected toiletries throughout the school year that were then donated to shelters, half-way houses and the military. We collected approximately 1500 items this year.

### **Office of Environmental Health & Safety**

- Founder and Promoted of the Winners Circle Blues Project. Once a month an evening concert is provided at the Winners Circle at the Rocky Hill Veterans Facility. Also provide entertainment for specific occasions. Some musicians are CCSU alumni. Board of Directors Connecticut Blues Society.

## **Extra-Divisional Units**

### **Center for Public Policy & Social Research**

- Annual and ongoing contracted series of professional development/training workshops for CT Association of Zoning Enforcement Officials (CAZEO), awarding professional credentials to municipal zoning officials and their office staff.
- CCSU students and CPPSR staff worked with two History classes, one Sociology class, and one Communication class to teach students how to participate in the collection of veterans' oral histories and assist in student documentaries; presentation of materials in the Veterans History Project (VHP) at several civic organization and conferences (i.e. Civitans, annual social studies conference, CT at War ASCH conference); presented at Library of Congress; interviewed 54 veterans across the state; mentored one intern from Public History program; several media opportunities (newspaper, radio and television coverage and 3 journal articles); curriculum development for high school history classes; collaborative 2-day workshop with Education Connection (and 70 high school students); assist two universities in creation of VHP on their campuses;
- client survey for Board of Education and Services for the Blind
- Conduct legislative case study on the mental health needs of returning veterans from Iraq and Afghanistan.
- Convert databases to Geographic Information System (GIS) layers; provide ARC GIS software training for State of CT Department of Agriculture staff.
- Data collection and analysis for protocol development for adult bail services for the State of CT Judicial Branch
- evaluation for criminal history felony cases for JRSA
- Evaluation for Southington School system
- Evaluation for State of CT Dept of Children & Families of JDB's (juvenile diversion boards).
- Evaluation of Adult Probation Programs for State of CT Judicial Dept.
- Individual and group professional development for faculty and staff and school climate survey for Plainville Community Schools
- Needs assessment of returning veterans from Iraq and Afghanistan for the Governor and the State of CT Veterans Affairs (VA) Commissioner. Follow-up survey sent to 10,000 veterans.
- Ongoing, contracted series of professional development/training workshops for CT Town Clerks Association, awarding professional credentials to municipal Town Clerks and their office staff, through the Association and the International Institute of Municipal Clerks, for which CPPSR functions as state affiliate.
- Program evaluation for Clinton school system
- Research support for President Miller's Most Literate Cities study.

### **Institute for Municipal and Regional Policy**

- "Production in the Community" – The IMRP supported a course-based project during which CCSU undergraduate students instructed and mentored Hartford youth in video camera use and video editing. Members of the project met weekly to work on creating their individual videos. The course was instructed by Dr. Teitler of the Communications Department and the Hartford students were identified by Hartford's not-for-profit agencies.
- Anti-Truancy and Out of School Suspensions - The IMRP, in collaboration with CCSU's Department of Teacher Education, is continuing its efforts to conduct an evaluation of truancy and violence prevention initiatives in Hartford's Naylor School. Both departments and Naylor

staff have had numerous preliminary discussions regarding this evaluation plan.

- Bridgeport Police Department Youth Diversion Programs – Working under the guidance of the Commission on Racial and Ethnic Disparity in the Criminal Justice System, the IMRP partnered with the Bridgeport Police Department on a youth diversion program aiming to prevent youth from entering the criminal justice system. The program is also designed to promote high school graduation, and community and self-improvement. The program is martial arts-based but incorporates many lessons on respect for self and others, self-control, and being a good member of the community.
- Building Bridges Conference V: Children of Incarcerated Parents: On Feb. 1, 2010, the IMRP hosted a daylong event focusing on awareness and the promotion of community driven action with regard to children affected by parental incarceration. Over 300 individuals from throughout the state attended the event.
- Children of Incarcerated Parents - The Connecticut General Assembly allocated funds to the IMRP to oversee services administered to children with an incarcerated parent, evaluate the effectiveness of services received, conduct research on the population and promote sound policy.
- Children of the Incarcerated - During this three-phase, multi-year project the Ensemble will be working with children in the Hartford-area who have a parent incarcerated. Phase I is an eight-week, once a week program that meets in the community or at the students' school. The second phase is a five-day, three-hours a day program engaging the youth in the arts. And the final phase is a weekend camp at York Correctional Institution during which children with a mother incarcerated at York will get to participate in extended visits with their mother, eat meals together, produce art pieces, etc. If funding is received from the Hartford Foundation, the IMRP will evaluate the affect each phase on its participants.
- Commission on Racial and Ethnic Disparity in the Criminal Justice System - The State of Connecticut Judicial Branch, Purchasing Services Office, has contracted with IMRP to act as consultant and provide administrative and technical assistance to the Commission on Racial and Ethnic Disparity in the Criminal Justice System. The Commission meets bi-monthly with a steering committee meeting more regularly.
- Connecticut State's Attorney's Forum on Criminal Prosecutions - In collaboration with the Office of the Chief State's Attorney, the IMRP held a forum at CCSU for students to attend and ask questions of the prosecutorial process in Connecticut. Panelists included the Chief State's Attorney, State Victim Advocate, law enforcement personnel, state's attorneys as well as CCSU's Chief of Police.
- Drug Policy Gubernatorial Forum – On March 18, 2010, The IMRP organized a gubernatorial forum to promote discussion and understanding among policy makers and stakeholders regarding the cost and effectiveness of current and potential drug policy in Connecticut. Potential gubernatorial candidates had the opportunity to question and comment on the presentations, which focused on the history of drug policy in Connecticut, the costs of criminalization, and available and potential drug treatments. Students, faculty and community members were in attendance and this forum has sparked a number of conversations at the community level in which the IMRP remains involved.
- Juvenile Probation Pilot Programs - The IMRP received a contract with the Judicial Branches' Court Support Services Division (CSSD) to evaluate their youth pilot probation program to assist CSSD with adjusting to the expected change brought about by Raise the Age: changing juvenile jurisdiction from 16 to 18 year olds. The IMRP continues to work on this evaluation.
- Multi-Year Research and Data-driven Direct Service Provision - The IMRP is currently contracting with Nutmeg Big Brothers Big Sisters and Families in Crisis to provide direct care services. The IMRP is evaluating the effectiveness of direct care services in alleviating negative responses to parental incarceration and improving the positive attributes of children of

incarcerated parents.

- Spring 2010 Community Engagement Project at Central Connecticut State University – This spring, in collaboration with the IMRP, students at the Dr. James H. Naylor School in Hartford worked with two English and Art classes at CCSU to produce both stories for the CCSU literary journal, *The Helix*, and a mural for the Naylor School campus. The work focused on the impact of incarceration on the community.
- Statewide Reentry Roundtable Collaboration – The IMRP has led efforts to bring together individual re-entry roundtables from across the state in anticipation of creating opportunities for collaboration and information sharing.
- The Connecticut Alliance to Benefit Law Enforcement (CABLE) – CABLE continued to host Advanced Crisis Intervention Team symposiums at CCSU in collaboration with the IMRP. Police officers, and other state officials, gathered to learn more about the role of mental illness in the criminal justice system: how to respond appropriately to a person in a mental crisis, how law enforcement can affect officers' mental health and how to remain healthy.
- The Hartford Public Library and Everyday Democracy Project – Investing in our Children: Community Costs of Incarceration – The IMRP is currently collaborating with Hartford Public Library and Everyday Democracy in a community discussion initiative with Hartford-area residents. The project's goals are: to serve as a pilot leading to the establishment of a permanent process/structure for community participation and action as well as community-driven policy change on local, regional, national and global public issues; and, to engage the community, especially those who are most affected by incarceration, in dialogue that leads to policy-making and personal action to improve the lives and conditions of children of incarcerated parents.
- Waterbury Police Activity League (PAL) evaluation - The IMRP conducted an evaluation of the Waterbury Police Department's Police Activity League (PAL). The final report was presented to the Waterbury Board of Education and an article on the findings of the evaluation was published in *Police Chiefs Magazine's* April 2010 edition.
- What I Want to Say – a collaborative project between the IMRP, Judy Dworin Performance Ensemble, the Department of Correction and Families in Crisis. The Ensemble worked with the incarcerated women at York as well as their children in the community. The project concluded with a day of sharing at York during which the mothers and children presented to each other what they had been working on. The families then enjoyed an extended visit with each other. This project in its entirety, from the planning meetings, to the rehearsals to the final day, was video recorded by CCSU Professor Jeff Teitler's staff and a short video was created which is posted on our website.

## **Institute for Technology and Business Development**

- Award to CCSU ITBD by the New Britain Job Discovery to serve underemployed community residents.
- CL&P Prime Program. Provide CT manufacturers LEAN implementations to improve processes & conserve energy. 100% funded by CL&P. Dates:7/09 – 6/10. Participants: 25
- CSD NB Middle School Career Awareness Pilot Program. Served Middle School Students (“Young Engineers”) with career instruction, including demonstrating linkage between CSD NB, CCSU School of Business programs and Community Career opportunities. Dates:7/09-7/09. Participants: 30
- CT DOT Business Development Program: Attendees. Served 140 Start-up Disadvantaged Business Enterprises – Business consulting since program inception. Dates:7/09 – 6/10. Participants: 26
- CT DOT Summer Student Internship Program. Administered six week program to provide high school and college students work experience, workshops and exploration of careers in transportation.. Dates:6/09 – 7/09. Participants: 10

- CWP Year-Round Youth Program. Served New Britain High School Youth in Healthcare, Financial Services, Information Technology, Engineering, and Hospitality Career Training.. Dates:3/10-6/10. Participants: 30
- First “Green Jobs” program in partnership with the “Green Up Bridgeport” with the Workplace Inc. workforce board in Bridgeport.
- First Statewide Interagency Funded (CT Dept. of Higher Education\Dept. of Health\Office of Workforce Competitiveness) Emergency Medical Technician (EMT) Training for 55 community people delivered in partnership with the ITBD Incubator tenant New Britain EMS Academy.
- General Training Programs & Projects with Workforce Boards. Provides custom training programs to CT companies, agencies and organizations to improve quality and productivity. Topics fall under the following: Technical, Quality, Lean Enterprises, Human Resource, and Computers.. Dates:7/09 - 6/10. Participants: 600
- Link with School of Education Nursing Program and New Britain EMS Training Academy to begin delivery of human simulation training with CCSU students and industry professionals.
- Multiple Workforce Investment Act\Trade Assistance Act workforce development programs for the unemployed from the five state Workforce Boards serving over 400 enrollees.
- Open Enrollment Programs. Provides training programs to individuals CT companies, agencies and organizations to improve quality and productivity. Topics fall under the following: Technical, Quality and Lean Enterprises, Human Resource, Computers.. Dates:7/09 – 6/10. Participants: 600
- Opportunities Industrialization Center of New Britain 20 Out of School Youth Manufacturing Training program.
- Opportunities Industrialization Center. Manufacturing Skills for HS Students. Dates:1/10 – 5/10. Participants: 20
- SBA Program. Provides custom training programs to CT companies, agencies and organizations to improve quality and productivity. Topics fall under the following: Technical, Quality, Lean Enterprises, Human Resource, and Computers.. Dates:7/09 – 12/10. Participants: 410
- SMALL BUSINESS DEVELOPMENT CENTER:.. Provide business start-up referrals to individuals.. Dates:7/09 – 6/10. Participants: 9
- TD Bank Funded Inter-district High School (New Britain, Berlin and Southington) training program on careers in Banking and Finance 30 High School Students).

## **Division of Information Technology**

### **Academic Technology: Instructional Design and Technology Resource Center**

- DCF Training Academy Advisory Board Member
- Early Learning Program, President of the Board of Directors
- Naylor CCSU Partnership Assisted with instructional technology initiatives and data collection.

### **User Support**

- Technology Donations - we review donation requests primarily from public and private schools and other non-profit organizations. We are able to provide computers to these groups on a regular basis.

## **Division of Student Affairs**

### **Counseling & Wellness Center**

- Mental health provider's Network Breakfast - 4-5 annual breakfast's networking with local mental health provider's to increase access for CCSU student to mental health treatment in the community. Also to promote business connections for the local community of providers including Hospital for Central Ct, Wheeler Clinic and Institute of Living, Hartford hospital, YWCA Sexual Assault Services etc.
- Statewide Healthy Campus Initiative Counseling and Wellness is also a member of the Statewide Healthy Campus Initiative organized via the Governor's Prevention Partnership for Safe, Successful and Drug-Free Kids. The vision of the Statewide Initiative is to foster a campus community that reduces occurrences of high-risk alcohol use, other drug use and the related consequences of high-risk behavior among college students on Connecticut campuses. On 2008 Key Leadership Award was presented to CCSU President Miller signed a commitment to support the Connecticut Statewide Healthy Campus Initiative, and to work to promote consistent, coordinated health promotion and substance abuse prevention efforts on our university campus. This Official Statement was also signed by the Commissioners of Mental Health and Addiction Services; Higher Education; and Governor M. Jodi Rell. More information on The Statewide Healthy Campus Initiative and the strategic action plan may be found at [www.preventionworksct.org/](http://www.preventionworksct.org/).
- Town & Gown Taskforce and the City of New Britain are proud to be considered good neighbors. We are committed to working with our community in addressing common concerns. The Town & Gown Task Force includes the City of New Britain, Central Connecticut State University, & Belvedere neighbors - who work together to address the problems of disruptive, off-campus house parties, and underage drinking. The Counseling & Wellness Center's Director Timothy Corbitt is Chair of Town and Gown and works with a team of CCSU students, faculty and staff with the surrounding community. Go to Town and gown on A-Z index and visit our website.

### **Department of Residence Life**

- Salvation Army Support A group of Students went to the Salvation Army to help sort items, and they learned about the agency.
- 1000 Paper Wishes Resident Students joined in the challenge to assemble 1,000 paper crane making kits to donate to the Connecticut Children's Medical Center for children with cancer.
- A clothing Drive Resident Students collected women and children's clothing that was then donated to Prudence Crandall Center.
- Baskets of Care Resident Students had a month long non-perishable food drive with several dozen cans donated to the charity of Shiloh Christian Ministries.
- Books for Soldiers Resident Students took part in a national program donating books, magazines, and other items to soldiers serving in the Mid-East.
- Cards for Care Resident Students decorated cards, and pictures for children at the Children's Hospital.
- Cards for Kids Resident Students made holiday cards for sick children which at New Britain Hospital.
- Coffee House for Canned Goods Resident Students collected can goods at a program and then went to the Friendship Center where they donated the food and helped prepare a meal.
- Give a Little Bit Resident Students made holiday ornaments and delivered them to the Children's hospital.

- Give A Little Get A Little Resident Students planned collections and donated several toys to 'Toys for Tots'
- Giving Gamers Resident Students donated toiletries for the Prudence Crandall Women's Shelter.
- Hanes 4 Haiti Resident Students decorated shirts and send them to the American Red Cross and were sent to the people of Haiti.
- How Much CAN You Donate Resident Students collected supplies and Toiletries and sent them to Haiti
- NOH8 Resident Students got a group together who attended a community program learning about and supporting same sex marriage.
- Second Annual Car Wash for Canned Goods with local business owner-Elmers. Cars washed for can goods. Over 50 cans were collected for Prudence Crandall Woman's Shelter.
- Strides Against Breast Cancer Resident Students partnered with the Women's Center help with the Breast Cancer Walk in Hartford
- Take Off Your Box Tops The Resident Students enough box tops to help the local elementary school get a new computer
- Thanksgiving Card Drive Resident Students made Thanksgiving Day cards for a local nursing home/rehab center, and delivered them to the center.
- Thanks-Living Resident Students paid to eat at a local eatery and proceeds went to the local elementary school.
- The Undie Run Resident Students did a clothing relay that ended with donations of clothing that was brought to the local homeless shelter
- Tricks for a Safe Treat Resident Students distributed flyers to houses surrounding campus with safety precautions for families on trick-or-treating for Halloween.
- Viking Donation Resident Students donated clothes, non perishable foods and other items to Southbury Training School's thrift store, and they were delivered by a group of students.

### **Office of Student Conduct**

- CCSU Office of Student Conduct Director Christopher Dukes, participated in an Association for Student Conduct Administration (ASCA) regional meeting (local/instate) for University Student Conduct Administrators and Student Affairs Administrators with Student Conduct responsibilities. Best Practices were shared for addressing behavioral trends, common issues, and challenges in the Connecticut region. The purpose of the one day forum was to provide collegial support and mentorship for student conduct initiatives.
- CCSU's First Annual Lavender Graduation. Developed as part of Program Assistant Marcia Butland's graduate degree capstone project and graduate internship. Lavender Graduation is a cultural celebratory tradition that acknowledges and cultivates a collective understanding and appreciation for the unique struggles and achievements LGBT and allied students.
- EOP Counselor Orientation. Educational outreach to contribute to the knowledge base for counselors as it relates to student rights and responsibilities as members of the CCSU university community.
- EOP/FYE Class Presentation. Educational outreach to contribute to the knowledge base for students as citizens as it relates to student rights and responsibilities as members of the CCSU university community.
- Football orientation. Educational outreach to contribute to the knowledge base for counselors as it relates to student rights and responsibilities as members of the CCSU university community.
- Latino ConnCAS orientation. Educational outreach to contribute to the knowledge base for Latino ConnCAS participants as it relates to student rights and responsibilities as members of the CCSU university community.

- Marcia Butland is a member of the GLBT Center Governing Board. The board is comprised of faculty, staff and student members. The board members advise the center on such matters as operations, programming and staffing.
- Office of Student Conduct Director, Christopher Dukes participated in the Association for Student Conduct Administration (ASCA) Circuit II (NY/CT/VT) meeting. Meeting is designed to afford opportunities for review of student conduct processes, policy analysis, as well as mentoring and outreach to student conduct colleagues.
- Office of Student Conduct Director, Christopher Dukes, attends regularly held Town and Gown community organization meetings. Also attending are New Britain Mayor Timothy Stewart, Police Chief Gagliardi, CCSU administrators, community neighbors, landlords, business owners and CCSU students.

### **Pre-Collegiate and Access Services**

- Annually, the Educational Opportunity Program (EOP) hosts Career Beginning on campus, a college preparatory program. EOP students make a presentation encouraging them to attend college and become career professionals.
- Annually, the Educational Opportunity Program (EOP) sponsors a Thanksgiving Food Drive and this year we collected some 40 boxes of non-perishable products and donated it to St. Mary's Church, New Britain, CT.
- At ConnCAP's annual Etiquette Banquet Middle School students ventured to Central Connecticut State University's campus and had a four course meal dining experience. At the Etiquette Banquet students were instructed and encouraged to actively practice the key tenets of dining etiquette, proper behavior, and proper conversational material.
- Bi-weekly I, the ConnCAP Middle School Site Coordinator, made trips to three New Britain middle schools to meet with participating ConnCAP students and conduct afternoon courses dedicated to supporting students in a variety of ways. Through activities and interaction the students were provided an outlet to explore careers, strengthen study skills, prepare for college, and build leadership qualities that can assist in successful development.
- ConnCAP Collaborates with the State Child Nutrition Program during the summer
- Middle School ConnCAP students and their parents were invited to the play Tom Sawyer at the Hartford Stage and allowed to experience the downtown Hartford community at its finest. The play educated parents and students on various issues closely related to American history, literature, and culture.
- Participate in the Connecticut Association and Educational Opportunity Program, (CAEOP) conference and served as a speaker.
- Recruited via orientations 8th graders for the ConnCAP Program in all middle schools, New Britain. Workshops were conducted at CCSU for students and their parents.
- Served on the New Britain Graduation Odyssey Committee to prevent drop-out from middle to high school students.
- The ConnCAP Program Collaborates with the (ARC) Alternative Route to Certification Program
- The ConnCAP Program collaborates with the CCSU's, Math Department's, 311 course. This connection allows CCSU students experiential learning and offer ConnCAP a great deal of support during the academic year.
- The ConnCAP Program work closely with New Britain High School students to ensure they have the tools and resources they need to pursue higher education.
- The ConnCAP Summer Program employs six peer mentors every summer. This opportunity helps to develop CCSU students in preparation for the workplace.
- The Educational Opportunity Program (EOP) hosted a community service partnership with the New Britain School District to promote higher education to public school students. EOP

students made several presentations during the academic school year.

### **Student Activities and Leadership Development**

- Best Buddies is to establish a global volunteer movement that creates opportunities for one-to-one friendships, integrated employment and leadership development for people with intellectual and developmental disabilities.' We do this at the college level by matching college student volunteers in mutually enriching friendships with persons with intellectual and developmental disabilities.
- Education Club- Holiday Bear- 35 volunteers- the club adopts some children who are nominated from New Britain and provide them with Christmas gifts that our members donate.
- Education Club- Science Night at Northend Elementary School- 25 students
- Education Club- YMCA parties in the fall/spring at the New Britain YMCA. We do different themed parties for example: Halloween, St. Patrick's Day, Valentine's Day. We usually have about 10-15 volunteers.
- Education Club-Math Night at Northend Elementary School- 25 students. Students are put into classrooms and learn different creative math skills not learned in the classroom while parents are in the cafeteria and learn how to do these activities at home and they also leave with the supplies to do it. We provide dinner and at the end of the night.
- Habitat for Humanity Club- Collegiate Challenge in California- 8 students. Students went to California to build a house for Habitat for Humanity during their spring break.
- Latin American Students Organization- Junior LASO initiative at East Hartford High School- 10 students. LASO mentored Latin Students in East Hartford about the importance of college.
- Newman Club, went on an alternative spring break trip to New Orleans to help in the revitalization efforts in the areas the were affected by the hurricane.
- PRIDE- True Colors Conference Volunteers at University of Connecticut- 15 students
- Women Involved Now!- Breast Cancer Walk in Hartford- 6 students

### **Student Affairs Office**

- Career Beginnings Juniors Go to College out of Hartford.
- CMHA (Community Mental Health Affiliates, Inc.) Board Member
- Fifth Graders Go to College Hartford Consortium
- Pathways to Technology Education and Business Board Hartford Magnet School

### **Student Center**

- Supports the Red Cross Bloodmobile Program supplying blood to local hospitals. Three sessions this year.
- The Student Center provides services and facilities, and supports programs which enhance the growth of the campus and community. Students are developed and educated through active participation in all we do. This is our mission statement. This includes state-wide events from the Governor's Office, National Professional Organizations, State and Local Non-Profit groups, Academic Departments sponsoring community groups and more.