



WRITING  
CENTER



# Signposting: Signaling Transitions



Writers use **signposts** to orient the reader and guide them through the logical connections of their writing. Signposts are words, phrases, or sentences that help structure the text, signal a transition, and clarify relationships between ideas. Here are some examples of effective signposts:

Introduce key points:

- “The first major issue to consider is ...”
- “In contrast to the previous points ...”

Being more specific

- “In particular, ...”
- “With respect to ...”
- “More specifically, ...”

Signal shifts or transitions:

- “Having discussed X, I turn now to Y ...”
- “While it’s true that X, it is also important to consider ...”

Emphasize important ideas:

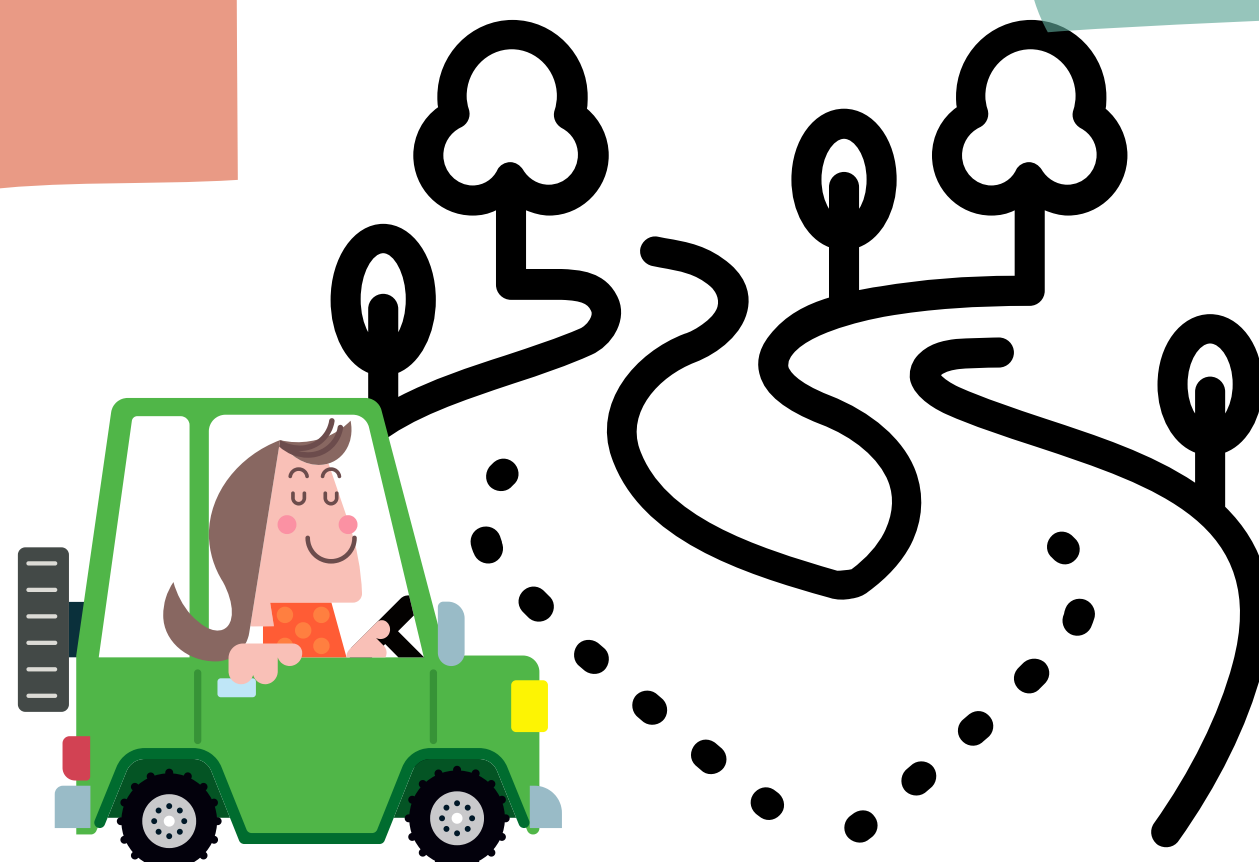
- “This suggests ...”
- “The most significant point is ...”

Summarize or conclude:

- “Overall ...”
- “This analysis demonstrates that ...”

Introduce evidence:

- “While some scholars argue ...”
- “For example, ...”



For more on signposting visit:

[https://owl.purdue.edu/owl/graduate\\_writing/graduate\\_writing\\_topics/graduate\\_writing\\_organization\\_structure\\_new.html](https://owl.purdue.edu/owl/graduate_writing/graduate_writing_topics/graduate_writing_organization_structure_new.html)



@ccsuwriting



@ccsuwritingcenter



CCSU Writing Center



@ccsucenter.bsky.social



860832-2765



Willard-DiLoreto W 314



casu.edu/writing center



## Now you try!

**Circle the signposts in the following paragraph.**

Although Mintzberg's study focused on top-level managers, his findings apply to all levels (Kurke & Aldrich, 1983; Gibbs, 1994). For example, a study of the factory supervisors found they undertook between 237 and 173 activities within a workday – more than one activity every two minutes (Guest, 1956). Such research supports the need for managers to develop a major network of contacts if they are to have influence and operate effectively (Luthans, 1988). Therefore, Mintzberg's work continues to have relevance now and into the future.

**Fill in the blank with an appropriate signpost.**

The Key River Water Treatment Plant is a state of the art facility which processes 20,000 tons of domestic wastewater yearly. Of this, 78% is recycled and the remainder treated before being pumped into the sea. The treatment process has three steps. \_\_\_\_\_, primary solids are removed using dissolved air floatation, clarification and sedimentation. The water \_\_\_\_\_ undergoes two filtration stages, and \_\_\_\_\_ chlorine disinfection. The extracted waste goes on to the local landfill.

**Circle the signposts in the following paragraph.**

We have already discussed the changes in divorce patterns which have occurred over the past ten years. Justy why they occurred remains an important question for sociologists. In this chapter, I critically examine three sociological explanations for the 'divorce phenomenon' and consider the social policy implications that each explanation carries with it. It will be argued that the best explanations are to be found within a broad socio-economic framework.

**Revise a paragraph in your own work by adding appropriate signposts.**

---

---

---

---

---

---

---

---