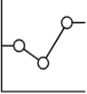


Instructions to download directly from IBM site – SPSS Modeler Premium version. 18.2.1 - Windows version (the steps for the MAC version are similar)


1. Click on this website:
<https://my15.digitalexperience.ibm.com/b73a5759-c6a6-4033-ab6b-d9d4f9a6d65b/dxsites/151914d1-03d2-48fe-97d9-d21166848e65/technology/data-science>
2. Click “Register now” and follow the prompts to register an account using your CCSU email address. You will receive a confirmation email to complete the registration.
3. After registration is complete, click back to the link above.
4. Log back in with your credentials. When you are logged in you will see the download window.



SPSS Modeler Premium

SPSS Modeler provides an intuitive graphical interface to help visualize each step in the data mining process. Automatically transforms data into the best format for the most accurate predictive modeling. Explore geographic data such as latitude and longitude, postal codes and addresses using SPSS.

[Register or login to access this resource](#)



SPSS Modeler Premium


SPSS Modeler provides an intuitive graphical interface to help visualize each step in the data mining process. Automatically transforms data into the best format for the most accurate predictive modeling. Explore geographic data such as latitude and longitude, postal codes and addresses using SPSS.

[Download macOS →](#)
[Download Windows →](#)
[Request an SPSS Authorization Code →](#)
[SPSS Community →](#)


5. You must obtain an SPSS Authorization Code in order to properly install the software. Click on “Request an SPSS Authorization Code.” Copy the code and click OK. In addition, an email will be sent to you with an authorization code.
6. Click on “Download Windows”
7. Choose HTTP for the Download method and then click the HTTP blue button .

Find by part number results

Find by part number criteria

Part numbers: 

Enter single or multiple part numbers (separated by commas) and click Search. Example: CRPQ4EN, C47EHML.

Download method: Download Director HTTP 

Sort by:

Find by part number results

eAssemblies (1)	Images (0)
<input type="button" value="Expand all"/> <input type="button" value="Collapse All"/>	<input type="button" value="Download Director"/> <input checked="" type="button" value="HTTP"/>

8. Select the radio button for “IBM SPSS Modeler Client 64-bit 18.2.1 Microsoft Windows Multilingual (CCOZBML)”

Use radio buttons below to select an image to download

IBM SPSS Modeler Client 64-bit 18.2.1 Microsoft Windows Multilingual (CCOZBML) - [View details](#)

Size 1,753MB

Date posted 26 Mar 2019

[License agreement](#) [Download estimate](#) [→ eAssembly](#)

9. Scroll down, select “I agree” and then click “Download now”

[License agreement](#) [Download estimate](#) [→ eAssembly](#)

By clicking the “I agree” button, you agree that (1) you have had the opportunity to read and understand the above license agreement(s) and multi-product package terms, if any, and (2) terms of the license agreement(s) govern this transaction. If you do not agree with the terms of the agreement(s), you will be unable to download the software.

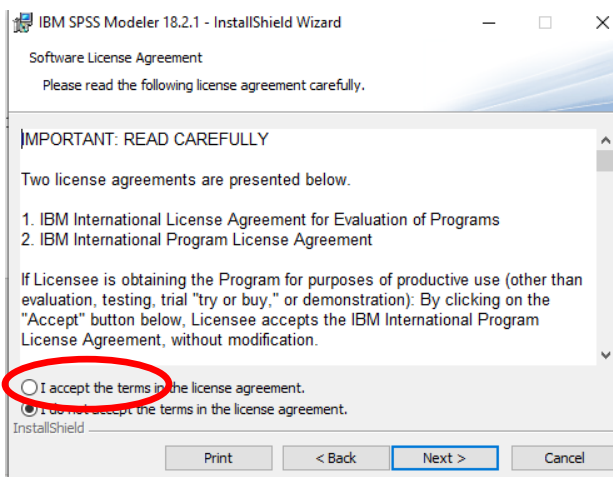
I agree I do not agree

[Download now](#)

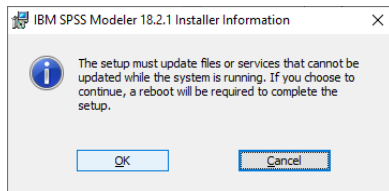
10. After the download is complete, it will save as a zip folder. Extract the files from the zip folder. Double click the zip folder from the Downloads folder and choose Extract All. This will put all the install files into a folder. Locate the Setup.exe file inside of the new folder (not the zip folder).

11. If this is a CCSU-owned computer and you do not have administrative rights, you need to contact the Help Desk, (860) 832-1720, techsupport@ccsu.edu, in order to execute the setup.exe file. If you are on your personal computer, double-click on setup.exe to execute the file and start installation.

12. Click on the Next button and follow the installation screens. Be sure to choose “I accept the terms...” when you come to that screen.

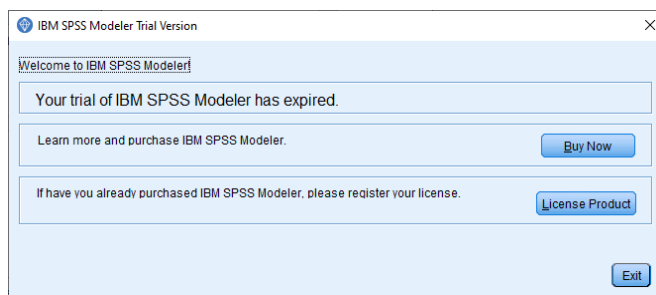


13. When you see this window, click on the OK button. The installation process requires a reboot of your computer when you are done.

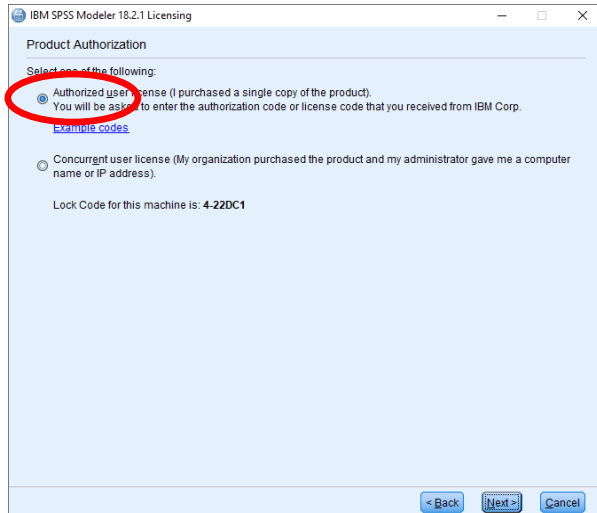


14. Installation may take a little while. When it successfully completes, click the Finish button.

15. If you left the “Start IBM SPSS Modeler 18.2.1 now” box checked, it will start the app when you click Finish. You may have to elevate to administrative rights if this is a CCSU-owned computer. Contact the CCSU Help Desk at (860)832-1720. This window will appear. Click on the License Product button.



16. Select Authorized user license, click on the Next button.



17. Enter the key that was copied to the clipboard in a previous step or find it in the email you received. After you put in the key, click on the Next button.

18. The next window will give an authorization status, successful. Click on the Next button to complete authorization.

19. The next window will tell you the expiration dates. Click on the Finish button.

20. Restart your computer to complete the installation.