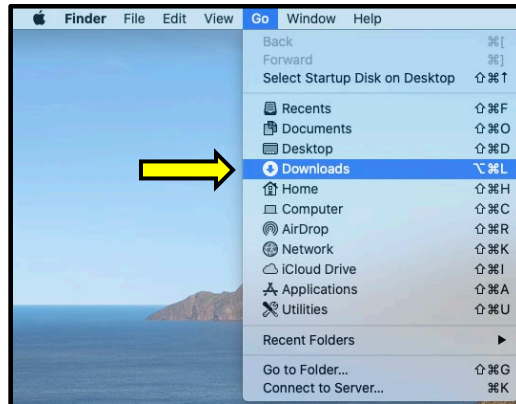



Splashtop software is used to access Apple/Mac campus computers remotely. An app needs to be installed on your laptop or mobile device. For Mac computers, follow the steps below to install the Splashtop app.

Personal Mac Computers:

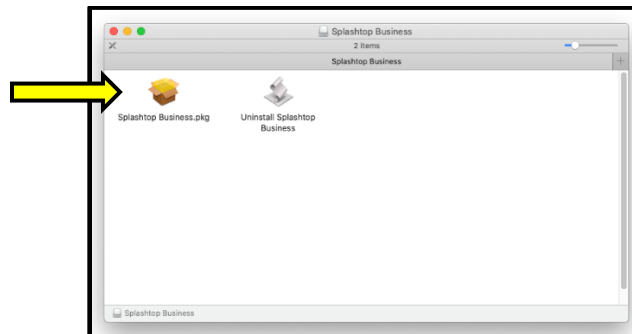
1. Go to “Go” in the top left of your computer. Then click on “Downloads”.



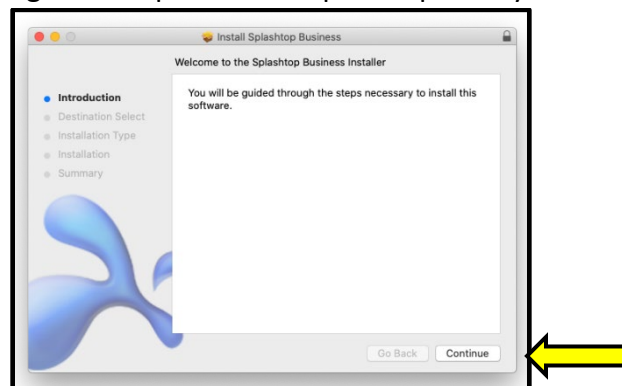
2. Open up the file called “Splashtop Business Mac INSTALLER” by searching for it.

Name	Kind	Size
 Splashtop_Business_Mac_INSTALLER_v3.4.0.1.dmg	Disk Image	12 MB

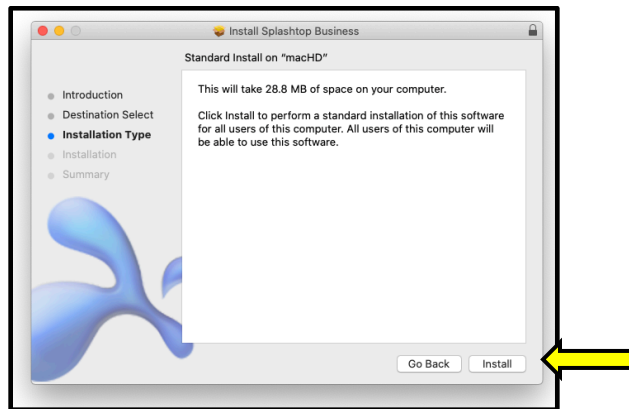
3. When the Installer opens, click on the “Splashtop Business.pkg”. The icon looks like a box.



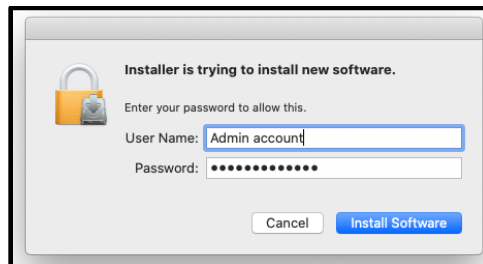
4. The Installer will guide you through the steps in install Splashtop onto your Mac. Click “continue”.



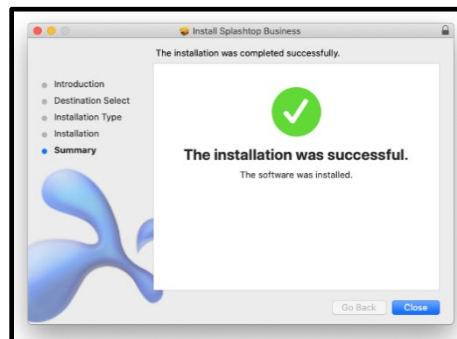
5. Select the Destination where you would like your app to be installed (i.e. desktop). Then, Installer will confirm a standard installation of the software. Click “Install”.



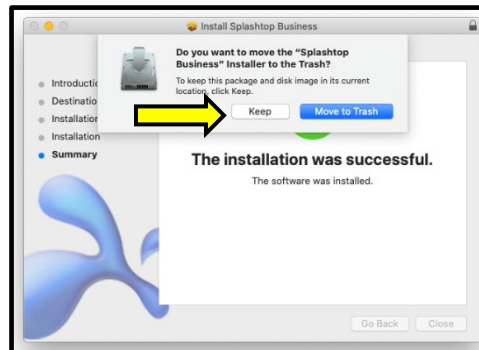
6. You will need to type in your username and password to confirm installing the software.



7. Your app will begin to install onto your computer. Once done, Installer will tell you that it has been successful. Click “Close”.



8. A box will pop up asking if you want to keep “Splashtop Business” Installer or move it to Trash. Click “Keep”.

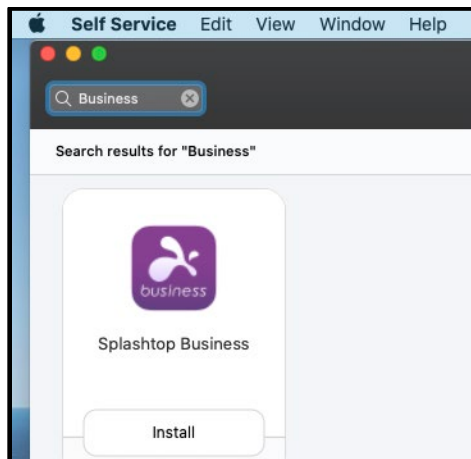


CCSU Mac Computers:

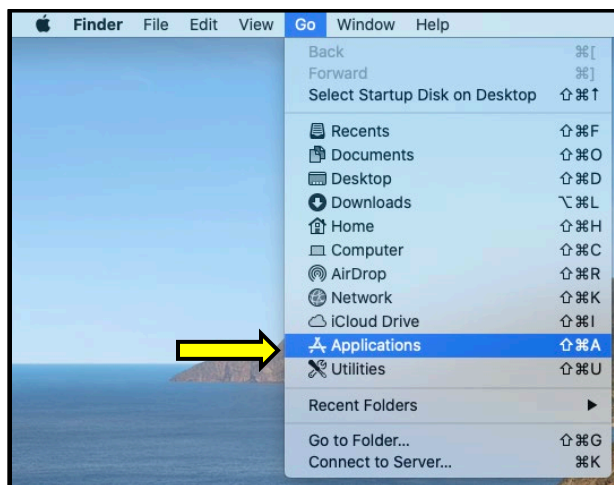
1. Open up the Self Service app on your computer.



2. Search for “Business” and then Click “Install” on Splashtop Business”.

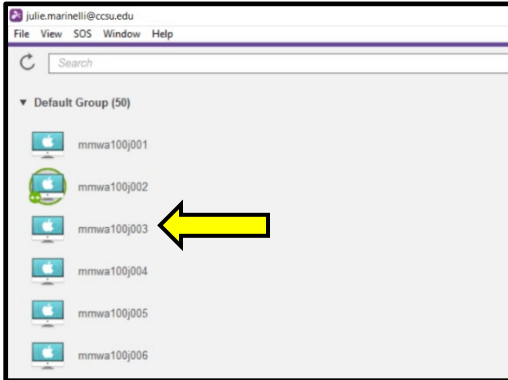


3. In the top left of your screen, click on “Go” and then “Applications” officially open Splashtop for the first time.



How to Login, Adjust Sound, and Logout of an Apple/Mac Campus Computer

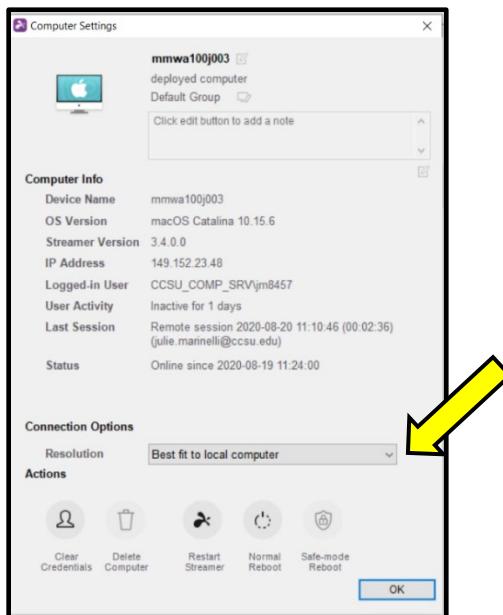
1. Click on an unoccupied computer. An occupied computer will have a green ring around it.



2. Once you click on the computer you want, look to the right of the screen to see your options. Click on the "settings" icon.



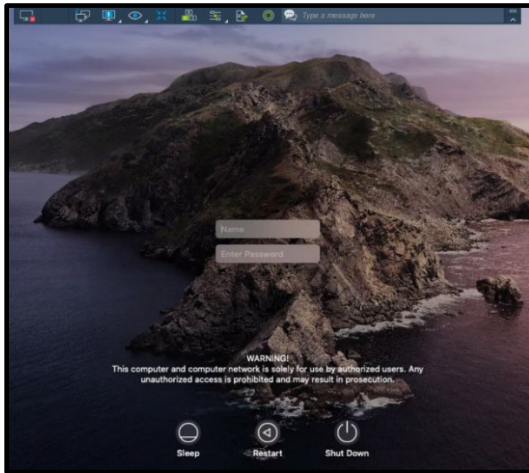
3. Click on the down arrow by "Resolution" under Connection Options. Select "Best fit to local computer." Then click "OK". This will improve the clarity and size of the images on the screen once you login.



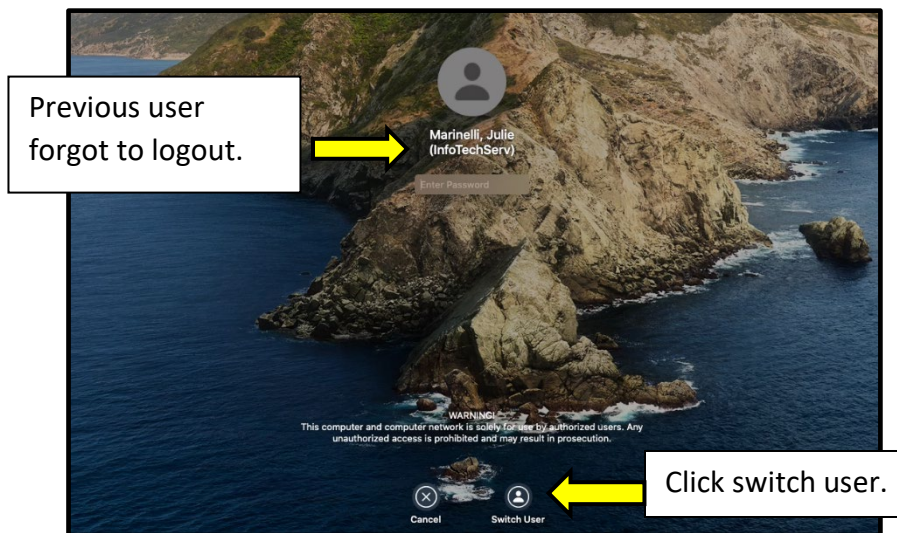
4. Now click on the "connect" icon to login to the Mac.



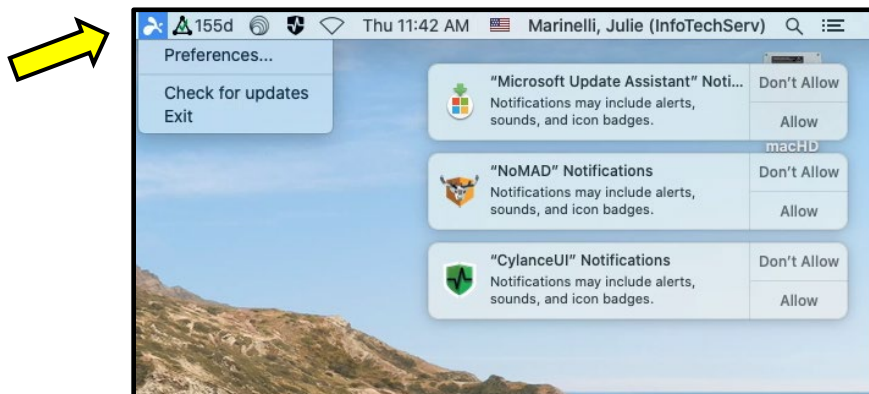
5. Login using your CCSU Bluenet username and password.



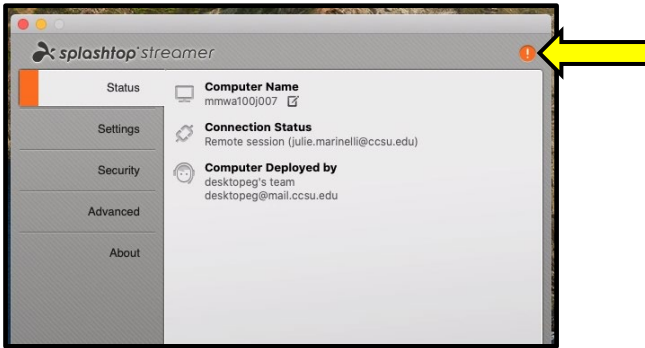
NOTE: If someone forgot to logout previously, you will see their name. Click “Switch User” and then login using your CCSU Bluenet username and password.



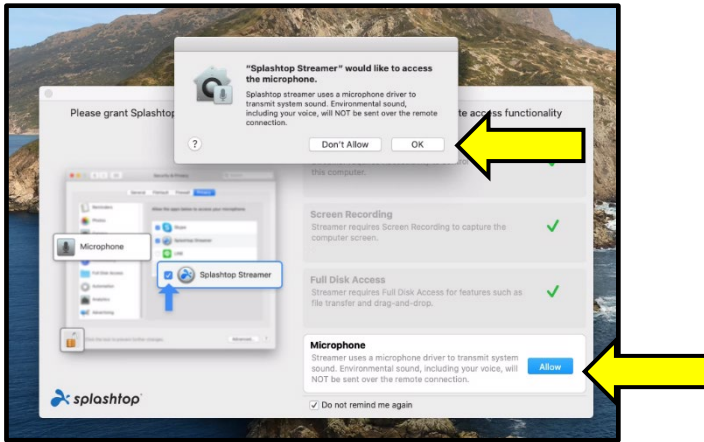
6. Once logged in, click on the Splashtop icon at the top right of your page to adjust “Preferences”.



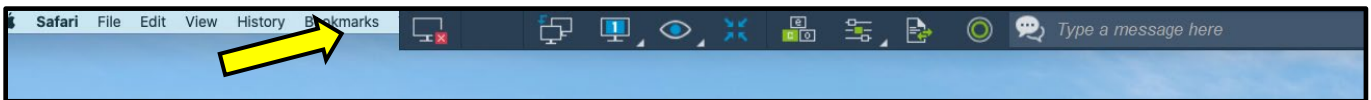
7. When “Preferences” opens, click on the “!” on the top right of the box.



8. In order to hear sound through the remote Apple/Mac, you must click “Allow” and then “OK”.



9. After making these changes, you must Disconnect and Reconnect to have the changes take effect.



10. Reconnect to the same computer by clicking the “connect” icon and then type in your password. Once you’re logged in, test for sound by opening a YouTube video.
11. When you are done using software on the remote Apple/Mac, click on the Apple symbol in the upper left corner of your screen and scroll down to Logout; click Logout. Note: You may get a pop-up window about AutoUpdate, click OK.
12. Once you are logged out, click “Disconnect” at the top of the screen.

NOTE: It is important that you logout BEFORE disconnecting from the remote desktop. Otherwise, computers will show as unavailable for other students.

